

AGRI INDUSTRIAL SUPPLY, INC.

REPLACEMENT CASE-IH®

Bearings and Seals.....	126-129
Disk Harrow Parts and Axles.....	130-131
Hubs and Spindles for Disk Harrows	132
Complete Bearing Assemblies and Eye Bolt.....	133
Wheel Bearing Kits.....	134-135

2020



REPLACEMENT CASE IH® BEARINGS & HOUSINGS
Popular Implement & Disk Bearings

AGRI PART #	REPLACES PART #	DESCRIPTION	BRAND
885151E	Case T26882, IHC526769R91	Long stem cultivator bearing	Agri
885152	IHC128558C91	Short stem cultivator bearing	Agri
WK2250	IHC140393C91	Packer wheel bearing	OEM
134158 AG	134158C92	Seeder bearing	
203-K	ST620, 1969300C, 80437C91	Planter bearing	Agri
203KKR-2	IHC666624R91	Rotary hoe and miscellaneous	Agri
203RR-2 AG USA	IHC666624R91	Rotary hoe and miscellaneous	Timken®
203KKR-5	611928R91	Planter and disk opener bearing	Agri
203KRR-5 AG USA	611928R91	Planter and disk opener bearing	Timken®
204BBAR	465003R91	Planter and miscellaneous bearing	Agri
204RR6 USA	465003R91	Planter and miscellaneous bearing	Timken®
204FREN	14516C91, 1258017C91, 493532R91	Disk opener bearing	Agri
204PY3 USA	14516C91, 1258017C91, 493532R91	Disk opener bearing	Timken®
205KR3	669807C91	Cotton picker bearing	Agri
205KRRB2	19529C91, 548928R91	Planter bearing	Agri
205KRRB2 AG USA	19529C91, 548928R91	Planter bearing	Timken®
205RVA	1337998C1	Planter bearing	Agri
205KRP2 AG	1337998C1	Planter bearing	Timken®
304PP50	48158293, 84397014	Seeder bearing	
88107	574428R91	Implement bearing	Agri
88128R	662519R91	Implement bearing	Agri
RAL012NPPB	165482C91	Planter and combine bearing	Agri
LM67010	651817R1, 652073R91	Wheel bearing cup	Timken®
LM67048	651818R91, 652074R91	Wheel bearing cone	Timken®
LM48510	144073C1, 618024R1, 671079R1	Wheel bearing cup	Timken®
LM48548	140074C91, 618023R91, 671078R91	Wheel bearing cone	Timken®
JLM506810	625743C1	Wheel bearing cup	Timken®
JLM506849	625742C1	Wheel bearing cone	Timken®
LM29710	1277608C1, 815213C1	Wheel bearing cup	Timken®
LM29749	1277607C1, 815217C91	Wheel bearing cone	Timken®
LM501310	21882890, 663558R1	Wheel bearing cup	Timken®
LM501349	21871630, 663557R91	Wheel bearing cone	Timken®
2720	17498D, 659921R1	Wheel bearing cup	Timken®
2776	21871501	Wheel bearing cone	Timken®
JLM104910	199955, 1957732C1	Wheel bearing cup	Timken®
JLM104948	199954, 1957731C1	Wheel bearing cone	Timken®
M12610	371883R1, 671082R91	Wheel bearing cup	Timken®
M12649	371882R91, 671081R91	Wheel bearing cone	Timken®

**REPLACEMENT
CASE IH®**

REPLACEMENT CASE IH® POPULAR DISK BEARINGS

AGRI PART # (IMPORT)	TIMKEN® USA	REPLACES PART #	DESCRIPTION
W208PP-5	W208PP5-AG	963889R91	1-1/8" square bore
W208PPB-5	W208PPB5-AG	630210R91	1-1/8" square bore
W208PP10	W208PP10-AG	H747303	1-1/2" round bore
W211PPB-3	W211PPB3-AG	630095R91	1-1/2" square bore
W209PPB-2	W209PPB2-AG	1251062C91	1-3/4" round bore
DC208TT-I	W208K3AG-AG	T16289	1-1/8" square bore
W208PPB-12	W208PPB12-AG	T28503	1-1/8" square bore
GW211PPB-3	GW211PPB3-AG	T51610	1-1/2" square bore
GW211PP3	GW211PP3-AG	T51653	1-1/2" square bore
GW210PPB-2	GW210PPB2-AG	T53781	1-15/16" round bore
GW210PPB-5	GW210PPB5-AG	T54897	1-3/4" round bore
GW209PPB-4	GW209PPB4-AG	T57851	1-1/2" round bore
SBX1226 NTN		193906A1	44.95mm round bore
GW212PP-I		193906A1	44.95mm round bore
DC212TTRBN-I		409556A1	2.1874 round bore
SBX1227 NTN		409556A1	2.1874 round bore
W211PPB-4	W211PPB4-AG	ST627A	2-3/16" round bore

**REPLACEMENT
CASE IH®**

PLEASE NOTE: NOT ALL TIMKEN® FAFNIR ARE MADE IN THE USA.
ASK YOUR SALES REP FOR COUNTRY OF ORIGIN INFORMATION.

**REPLACEMENT IHC® COTTON PICKER BEARINGS:
FOR MODELS 422, 622, 782, 1822, & 1844**

REPLACES IHC PART #	DESCRIPTION
ST205A	Picker drive bearing on pinion shaft: fits models 422, 622 and 782
ST213	Picker drive bearing on sprocket shaft; fits models 422, 622 and 782
ST215	Doffer drive bearing; fits models 214, 220, 314 and 320
ST225	Sealed picker drive bearing on all older model pickers
ST247	Horizontal shaft gearbox bearing; fits models 422, 622 and 782
ST287	Doffer adjustment screw bearing on models 422, 622, 782 and 1844. Also fits Doffer drive upper shaft on 1822 and 1844 models.
ST533	Spindle drive bearing on older models 214, 220, 314, 320, 422, 622 and 782
ST719	(Substitute for st546) top spindle drive bearing on 422, 622 and 782 models
201118C91	Cam center bearing on drum rotor and drive cam on models 1822 and 1844
209717C91	Spindle gear needle bearing on picker bar on models 1822 and 1844. Made in USA.
220355C1	Upper picker bar seal for models 1822 and 1844
372070R91	(Substitute for 216585c91) thrust bearing on picker bar and. Spindle on models 1822 and 1844. Made in USA.
216581C1	Thrust washer used with 372070r91 thrust bearing (see above). Made in USA.
584148R91 / 223826R91	Drum drive shaft bearing on drum rotor and drum cam on models 1822 and 1844.
566632R92	Upper auxiliary drum idler shaft bearing on models 1822 and 1844.
587015R92 / 156359C91	Lower auxiliary drum idler shaft bearing on models 1822 and 1844.
665420R91	Double chain idler sprocket bearing on models 422, 622, 782. Made in USA.
662519R91	Doffer drive shaft bearing on models 1822 and 1844
666624R91-USA	Rotor drive and rear spindle idler sprocket bearing on models 622, 782, 1822 and 1844. Made in USA.
666624R91	Same as above - import bearing.
669807R91	Lower pedestal bearing on drum rotor and drive cam and lower doffer shaft bearing on models 1822 and 1844. Made in USA.
536053R91	Outer cone bearing on gear box on models 1822 and 1844. Made in USA.
536054R91	Outer cup bearing on gear box on models 1822 and 1844. Made in USA.
618023R91 / G57452	Lower cone bearing on gear box on models 1822 and 1844. Made in USA.
618024R91 / G57451	Lower cup bearing on gear box on models 1822 and 1844. Made in USA.
642955R91	Outer cone bearing on gear box on models 1844 drum 2 and 3; drum drive bearing inner on models 1822 and 1844. Made in USA.
642954R91	Outer cup bearing on gear box on models 1844 drum 2 and 3; drum drive bearing inner cup on models 1822 and 1844. Made in USA.

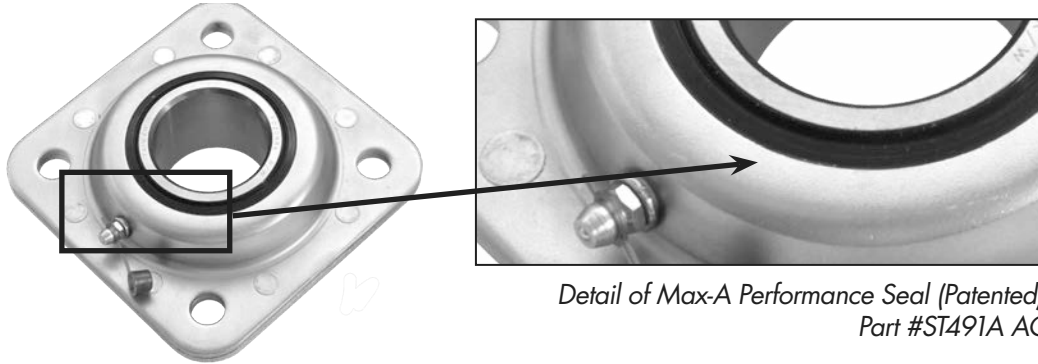
**REPLACEMENT
CASE IH®**

REPLACEMENT CASE IH® DISC BEARINGS & FLANGED DISC UNITS

Max-A Performance Seal (Patented)

MAX-A PERFORMANCE SEAL

Patented



Detail of Max-A Performance Seal (Patented), Part #ST491A AG

AGRI PART #	REPLACES PART #	DESCRIPTION
ST491A AG (pictured above)	ST491A	1-3/4" round bore. Fits 470, 480, 490, 3900, and 3950.
DHU491A AG	ST491A	Timken® brand USA
FD209TTRJA	ST491A	NTN brand
FD209RB-I	IHC #ST3027	1-1/2" round bore, Agri brand.
DHU 1-1/2" R209 AG	IHC #ST3027	Timken® brand USA
FD211RJA-I	IHC #ST3012A	1-15/16" round bore, Agri brand.
DHU 1-15/16" C211 AG	IHC #ST3012A	Timken® brand USA
FD211RB-I	ST740B	2-3/16" round bore. Fits IH 500 and 501, Disk Case 770, and MRX690. Agri Brand.
DHU 2-3/16" R211 AG	ST740B	Timken® brand USA

**REPLACEMENT
CASE IH®**

ALSO AVAILABLE FOR OTHER OEMS

BEARING GUARD



AGRI PART #	DESCRIPTION
129753AG	Bearing guard for #FD211RB-I DHU 2-3/16" R11 bearing and Case IH® #ST740B.

REPLACEMENT IHC® DISK HARROW PARTS: FOR RMX340, 470, 475, 480, 485, 490, 496, 3800, 3805, 3900, & 3950 DISKS

Spools

REPLACEMENT CASE IH®

AGRI PART #	REPLACES PART #	DESCRIPTION	
	1A112	101189C1	1-5/8" round hole, new style, 7-1/2" spacing
	1A113	101190C1	3" round hole, new style, 9" spacing
	1A114	101191C1	4" round hole, new style, 7-1/2" and 9" spacing
	1A115	472591R3	4" square hole, old style, 7-1/2" and 9" spacing
	1A116	472592R3	1-5/8" square hole, old style, 7-1/2" spacing
	1A117	472593R3	3" square hole, old style, 9" spacing
	1A111	481416R1	7-1/2" square hole, old style, 7-1/2" spacing
	1A118	481417R1	9" square hole, old style, 9" spacing
	1A121	1239918C1	9" spool for 1-1/2" axle
	1A122	129532C2	Gang bearing standard

Sleeves



AGRI PART #	REPLACES PART #	DESCRIPTION
1A125	652383R1	Sleeve, 5-1/16" long
1A126	472594R1	Sleeve, 6-1/16" long
1A127	652412R1	Sleeve, 7-1/4" long
1A128	112410C1	Sleeve, 8-3/4" long

REPLACEMENT IHC® DISK HARROW PARTS: FOR 350, 370, 470, 475, 480, 485, 490, 496, 501, 760, & 790 DISKS



Axles: Made in USA



AGRI PART #	REPLACES PART #	DESCRIPTION
1A140	468697R1	Axle 1-1/8" square x 40-1/4" for wings
1A141	652939R2	Axle 1-1/8" square x 67.4
1A142	472586R2	Axle 1-1/8" square x 71.9
1A129	468582R2	Axle 1-1/8" square x 76.4
1A143	468583R2	Axle 1-1/8" square x 79.4
1C58831	58831	Axle 1-1/2" square x 47.3
1C549978	549978	Axle 1-1/2" square x 57.9
1C549979	549979	Axle 1-1/2" square x 68.2
1C549980	549980	Axle 1-1/2" square x 78.9
1C549981	549981	Axle 1-1/2" square x 89.4

**REPLACEMENT
CASE IH®**

Miscellaneous Items & Hardware



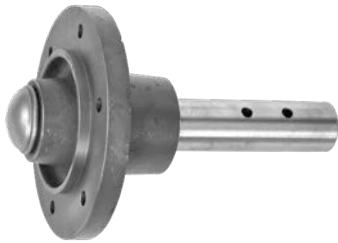
AGRI PART #	REPLACES PART #	DESCRIPTION
1A131	468584R1	Casting bumper washer. Fits models 470-490.
1A132	481611R1	Casting end washer. Fits models 470-490.
1A133	P34101	Gang bolt lock washer

Scrapers

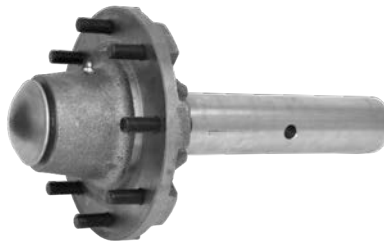


AGRI PART #	REPLACES PART #	DESCRIPTION
1A123	121120C2	Scraper complete, right hand. Fits 490 and 496 disk.
1A124	121119C2	Scraper complete, left hand. Fits 490 and 496 disk.

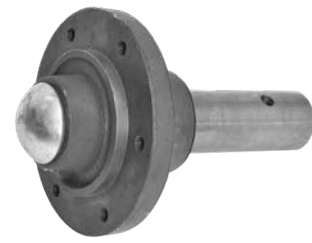
REPLACEMENT IHC® DISK HARROW PARTS



Part #B91354 AG



Part #A224225 AG



Part #B91353 AG

Fits 470-475, 480, 485, 490, Early 496, 500, 501, 610, & 760 Disks Only



AGRI PART #	REPLACES PART #	DESCRIPTION
AGRI #465493	465493R1	Hub with cups, boxed
AGRI #478375	478375R1	Spindle for 465493 hub, boxed
A1103	69442D	Spindle washer only
A1102	369857R1	Spindle nut
AGRI #5 Kit	63881C91	Bearing kit for #465493 transport wheel hub - Timken®
AGRI #B91354-AG	B91354, 87428170	Complete hub assembly with hub, spindle, bearing seals, and hub cap, boxed

REPLACEMENT CASE IH®

Fits 8 Bolt 6" Pivot Diameter for IH® 3950 & Some RMX370 Applications



AGRI PART #	REPLACES PART #	DESCRIPTION
AGRI #160 Hub	87407202	Hub with cups and studs, boxed
AGRI #160	427951A1	Spindle for hub
AGRI #3950 Kit		Complete bearing kit, boxed, Timken® brand
AGRI #224225-AG	224225A1	Complete hub assembly with hub, spindle, bearing seals, and hub cap, boxed

Fits Late 496, 770, 780, & 3900 Disks



AGRI PART #	REPLACES PART #	DESCRIPTION
AGRI #468-H	606468R21	Hub with cups, boxed
AGRI #468-S	1978726C1	Spindle for hub
AGRI #6 Kit	123096A2 USA	Bearing kit, boxed, Timken® brand
AGRI #B91353-AG	B91353, 87428171	Complete hub assembly with hub, spindle, bearing seals, and hub cap, boxed

REPLACEMENT CASE IH® COMPLETE BEARING ASSEMBLIES & PARTS

Complete Bearing Assembly for RMX340 & 3950 Flex Wing Tandem



PART #	DESCRIPTION
Agri #907AG	Complete bearing assembly for RMX340m and 3950 flex wing tandem. Includes housing, bearing, spacer, and snap ring - Replaces #193907A1 housing - Replaces #193906A1 bearing - NTN brand bearing
Agri #907AG-I	Same as above with Agri brand bearing
193907AG	Replacement housing only. Replaces Case-IH® #193907A.
SBX1226 NTN	Replacement bearing only. Replaces Case-IH® #193906A1. NTN brand.
GW212PP-I	Same as above. Agri brand.
87016938AG	Snap ring
193929A1	Washer spacer

REPLACEMENT
CASE IH®

Complete Bearing Assembly for RMX690 & 870 Eco Tiger Disk Ripper



PART #	DESCRIPTION
Agri #908AG	Complete bearing assembly for RMX 370, MRX 690M, and 870 Eco-Tiger disk ripper. Includes housing, bearing, spacer, snap ring - Replaces #193907A1 housing - Replaces #409556A1 bearing. NTN brand bearing.
Agri #908AG-I	Same as above with Agri brand bearing
193907AG	Replacement housing only. Replaces Case-IH® #193907.
SBX1227 NTN	Replacement bearing only. Replaces Case-IH® #409556A1. NTN brand.
DC212TTRBN-I	Same as above. Agri brand.
87016938AG	Snap ring
193929A1	Washer spacer

Eye Bolt



AGRI PART #	DESCRIPTION
195495AG	Fits RMX 340, 370, and 3950 tandem disk. Replaces Case-IH® #195495A1.

REPLACEMENT CASE IH® BEARING KITS



REPLACEMENT CASE IH®

AGRI PART #	REPLACES PART #	DESCRIPTION
AGRI #5 Kit	63881C91	Transport wheel bearing kit for 470-501 disks
AGRI #6 Kit	123096A2	Transport wheel bearing kit for IHC® Chisel Plow 5500, 5600, 5700; IH® Vibra Shank Cultivators 4500 and 4600. Fits disk harrows 596, 770, and 3900. Also fits RMX 340, RMX 370, and RMX 690 with 6-bolt hubs.
AGRI #2590 Kit		Wheel bearing kit for 2390 and 2590 disks
AGRI #3950 Kit		Wheel bearing kit for 3950 with 8-bolt hub. Also fits RMX 340 and RMX 370 with 8-bolt hubs.
RMX #1		Pivoting rocking tandem Kit for RMX 340 and RMX 370. Also fits DMI Tigermate double fold walking beam.
Tigermate 1		Fits Tigermate II DMI walking tandem for 10' and 12' single fold main and wings.
Tigermate 2		Fits Tigermate II DMI wheel bearing kit
Tigermate 3		Fits Tigermate II DMI double fold walking beam. Also fits MRX 690 pivoting walking tandem.
Tigermate 4		Wheel bearing kit. Fits all DMI applications using 50-8 hub, 8-bolt.
Tigermate 5		Wheel bearing kit for Tigermate DMI applications using Q633 hub, 4-bolt.
Tigermate 6		Wheel bearing kit for Tigermate II and DMI using Q710 6-bolt hub.
Tigermate 7		Wheel Bearing Kit for Tigermate DMI using 783 hub using CR 16289 seal, 6-bolt.
B94351 Kit		Wheel bearing kit for 4800 field cultivator

TIMKEN

BEARING KITS CONTAIN TIMKEN® BEARINGS

REPLACEMENT CASE-IH® WHEEL & HUB BEARING KITS

PART #	DESCRIPTION
330 Turbo	Fits 330 Turbo Hill hubs
Agri #415	Fits 415 Case® Multi Packer
B94351 Kit	Fits 4800 Case-IH® Field Cultivator
530 DL Kit	Fits 530 Case-IH® Ripper Disk Leveler
530 DM Kit	Fits 530 Case® Disk Mount Ripper
RMX #1	Pivoting Rocking Tandem Kit for RMX 340 and RMX 370. Also fits DMI Tigermate double fold walking beam.
RMX340-6	Fits RMX 340 6-bolt style
RMX340-8	Fits RMX 340 8-bolt hub

REPLACEMENT
CASE IH®

TIMKEN

BEARING KITS CONTAIN TIMKEN® BEARINGS