

AGRI INDUSTRIAL SUPPLY, INC.

HUBS & SPINDLES

Hubs and Spindles, Bearings and Seals..... 156-159

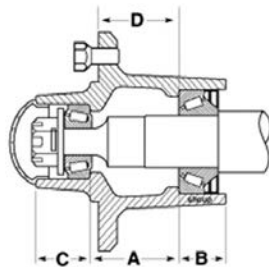
2020



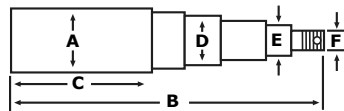
HUB WITH SPINDLE & COMPONENT PARTS

Hubs are assembled with cups.

HUB #100

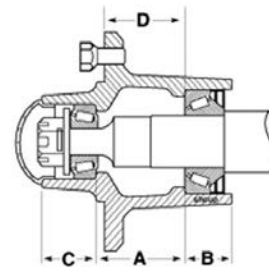


HUB #100 DIMENSIONS	
A— 2.00"	C— 1.12"
B— 1.00"	D— 0.38"

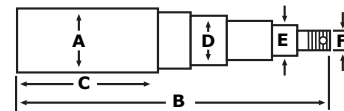


SPINDLE #100 DIMENSIONS	
A—1.63"	D—1.250"
B— 9.31"	E— 0.750"
C— 4.72"	F— 3/4-16

HUB #105



HUB #105 DIMENSIONS	
A— 1.56"	C— 0.94"
B— 1.03"	D— 0.19"



SPINDLE #105 DIMENSIONS	
A—1.75"	D—1.375"
B— 12.31"	E— 1.250"
C— 8.47"	F— 3/4-16

HUBS W/ SPINDLES & COMPONENT PARTS

Hub #100: 1500 lb. Capacity

PART #	DESCRIPTION
HUB #100	4-stud, 5" bolt circle, 3.62" pilot diameter, 1500 lb. capacity. Replaces EWC Q633. Same as Wilton #280501.

Spindle #100 Replaces spindle #280700

Hub #105: 2500 lbs. Capacity

PART #	DESCRIPTION
HUB #105	5-stud, 5.5" bolt circle, 4" pilot diameter, 2500 lb. capacity, 25-5 series, . Replaces French and Hecht #25-5 and #104683. Hub assembly with cups and studs. Same as Wilton #281011.

Spindle #105 Replaces spindle #281210

Replacement Bearings & Seals for Above Hub #100

PART #	DESCRIPTION
LM67010 Timken®	Inner bearing cup
LM67048 Timken®	Inner bearing cone
LM11910 Timken®	Outer bearing cup
LM11949 Timken®	Outer bearing cone
204013 Timken®	Grease seal
909911	Dust cap

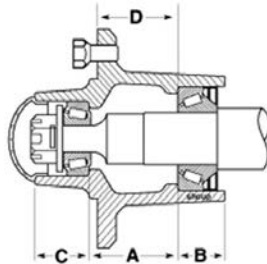
Replacement Bearings & Seals for Above Hub #105

PART #	DESCRIPTION
LM48510 Timken®	Inner bearing cup
LM48548 Timken®	Inner bearing cone
LM67010 Timken®	Outer bearing cup
LM67048 Timken®	Outer bearing cone
204038 Timken®	Grease seal
909905	Dust cap

HUB WITH SPINDLE & COMPONENT PARTS

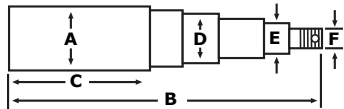
Hubs are assembled with cups.

HUB #110



HUB #110 DIMENSIONS

A— 2.19"	C— 0.94"
B— 1.00"	D— 1.94"



SPINDLE #110 DIMENSIONS

A—1.75"	D—1.50"
B— 9.88"	E— 1.25"
C— 5.41"	F— 3/4-16

Hub #110: 3000 lbs. Capacity

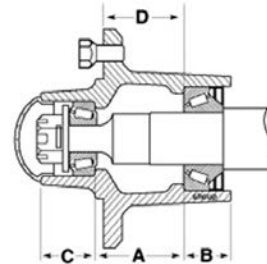
PART #	DESCRIPTION
HUB #110	6-stud, 6" bolt circle, 4.62" pilot diameter, 3000 lb. capacity, 30-6 series. Replaces French & Hecht #30-6 and #106749. Hub assembly with cups and studs. Same as Wilton #281031.

Spindle #110 Replaces spindle #281220

Replacement Bearings & Seals for Above Hub #110

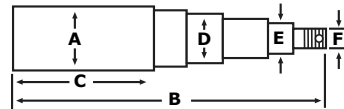
PART #	DESCRIPTION
LM29710 Timken®	Inner bearing cup
LM29749 Timken®	Inner bearing cone
LM67010 Timken®	Outer bearing cup
LM67048 Timken®	Outer bearing cone
204038 Timken®	Grease seal
909905	Dust cap

HUB #120



HUB #120 DIMENSIONS

A— 2.84"	C— 0.97"
B— 1.44"	D— 1.56"



SPINDLE #120 DIMENSIONS

A—2.00"	D—1.625"
B— 14.00"	E— 1.250"
C— 8.81"	F— 3/4-16

Hub #120: 3500 lbs. Capacity

PART #	DESCRIPTION
HUB #120	6-stud, 6" bolt circle, 4.62" pilot diameter, 35-6 series. Cups installed. Replaces French & Hecht #35-6 and #106164. Same as Wilton #281041.

Spindle #120 Replaces spindle #281230

Replacement Bearings & Seals for Above Hub #120

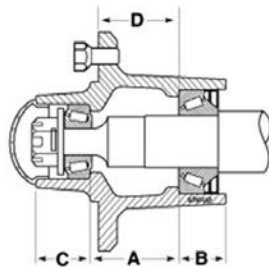
PART #	DESCRIPTION
LM501310 Timken®	Inner bearing cup
LM501349 Timken®	Inner bearing cone
LM67010 Timken®	Outer bearing cup
LM67048 Timken®	Outer bearing cone
204508 Timken®	Grease seal
909905	Dust cap

HUBS W/ SPINDLES & COMPONENT PARTS

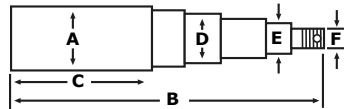
HUB WITH SPINDLE & COMPONENT PARTS

Hubs are assembled with cups.

HUB #130



HUB #130 DIMENSIONS	
A— 2.50"	C— 1.13"
B— 1.38"	D— 1.75"



SPINDLE #130 DIMENSIONS	
A—2.12"	D—1.796"
B— 15.50"	E— 1.375"
C— 9.31"	F— 7/8-14

Hub #130: 4910 lbs. Capacity

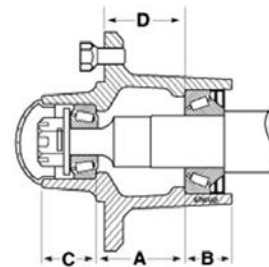
PART #	DESCRIPTION
HUB #130	6-stud, 6" bolt circle, 4.62" pilot diameter, 4910 lb. capacity, 803 series. Cups installed. Replaces EWC Q803. Same as Wilton #280581.

Spindle #130 Replaces spindle #280731

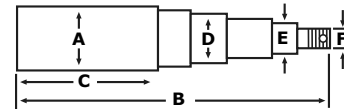
Replacement Bearings & Seals for Above Hub #130

PART #	DESCRIPTION
25520 Timken®	Inner bearing cup
25590 Timken®	Inner bearing cone
25821 Timken®	Outer bearing cup
25877 Timken®	Outer bearing cone
204506 Timken®	Grease seal
909982	Dust cap

HUB #140



HUB #140 DIMENSIONS	
A— 1.53"	C— 1.03"
B— 1.09"	D— 1.53"



SPINDLE #140 DIMENSIONS	
A—1.75"	D—1.496"
B— 12.50"	E— 1.250"
C— 7.88"	F— 7/8-16

Hub #140: 3560 lbs. Capacity

PART #	DESCRIPTION
HUB #140	6-stud, 6" bolt circle, 4.62" pilot diameter, 3560 lb. capacity, 888 series. Cups installed. 6 wheel bolts included. Replaces EWC Q888. Same as Wilton #280551.

Spindle #140 Replaces Spindle #280720

Replacement Bearings & Seals for Above Hub #140

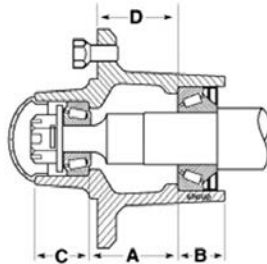
PART #	DESCRIPTION
JL69310 Timken®	Inner bearing cup
JL69349 Timken®	Inner bearing cone
LM67010 Timken®	Outer bearing cup
LM67048 Timken®	Outer bearing cone
204500 Timken®	Grease seal
909905	Dust cap

HUBS W/ SPINDLES & COMPONENT PARTS

HUB WITH SPINDLE & COMPONENT PARTS

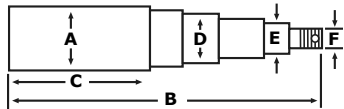
Hubs are assembled with cups.

HUB #150



HUB #150 DIMENSIONS

A— 1.56"	C— 1.06"
B— 1.00"	D— 1.50"



SPINDLE #150 DIMENSIONS

A—1.75"	D—1.50"
B— 14.00"	E— 1.25"
C— 10.00"	F— 1-14

Hub #150: 3000 lbs. Capacity

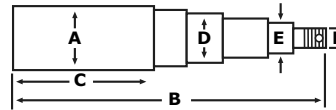
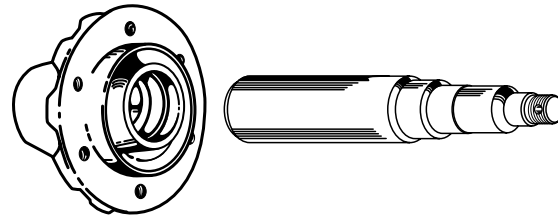
PART #	DESCRIPTION
HUB #150	6-stud, 6" bolt circle, 3600 lb. capacity, 611 series. Cups installed. Fits Do-Alls for John Deere®, IHC, Willrich, and others.

Spindle #150 Replacement spindle

Replacement Bearings & Seals for Above Hub #150

PART #	DESCRIPTION
LM29710 Timken®	Inner bearing cup
LM29749 Timken®	Inner bearing cone
LM67010 Timken®	Outer bearing cup
LM67048 Timken®	Outer bearing cone
204500 Timken®	Grease seal
909905	Dust cap

HUB #160



SPINDLE #160 DIMENSIONS

A—2.75"	D—2.165"
B— 14.00"	E— 1.625"
C— 8.53"	F— 1-14

Hub #160: 3500 lbs. Capacity

PART #	DESCRIPTION
HUB #160	8-stud, 8" bolt circle, 6" pilot diameter. Replacement hub fits Case IH® 340, 370 (19'-17'), 770, 3950, RMX340, RMX370, RMX 790 mainframe and wings. Vertical tillage, Turbo-Tandem™ 330 mainframe (22'-34'); wing (31', 34'). Replaces Case-IH® #87407202 and #86990965.

Spindle #160 Replaces spindle #427951A1

Replacement Bearings & Seals for Above Hub #160

PART #	DESCRIPTION
JLM506810 Timken®	Inner bearing cup
JLM506849 Timken®	Inner bearing cone
LM501310 Timken®	Outer bearing cup
LM501349 Timken®	Outer bearing cone
200851 Timken®	Grease seal
909912	Dust cap

HUBS W/ SPINDLES & COMPONENT PARTS