

## **ROLLER CHAIN**

---

Import Roller Chain .....	161-163
USA Roller Chain .....	164-165
Steel Detachable Chain, Cotton Module .....	166
John Deere Planter Chain and Sprockets .....	167
Case-IH Chain and Ditcher Chain .....	168
Idler Sprockets .....	169

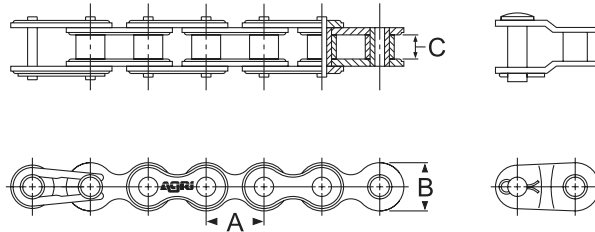
2020



## ANSI ROLLER CHAIN: IMPORT

- Ten (10) feet per box (10')
- Chain is also available in reels.
- Ask your Agri Industrial Supply sales rep about cut-to-length sizes.

### Single Strand



CHAIN #	A	B	C	CONNECTING LINK #	OFFSET LINK #
RC-25	1/4"	.230"	1/8"	RC-25 CL	RC-25 OL
RC-35	3/8"	.340"	3/16"	RC-35 CL	RC-35 OL
RC-40	1/2"	.463"	1/4"	RC-40 CL	RC-40 OL
RC-41	1/2"	.386"	5/16"	RC-41 CL	RC-41 OL
RC-50	5/8"	.579"	3/8"	RC-50 CL	RC-50 OL
RC-60	3/4"	.673"	1/2"	RC-60 CL	RC-60 OL
RC-80	1"	.935"	5/8"	RC-80 CL	RC-80 OL
RC-100	1-1/4"	1.165"	3/4"	RC-100 CL	RC-100 OL
RC-120	1-1/2"	1.378"	1"	RC-120 CL	RC-120 OL
RC-140	1-3/4"	1.661"	1"	RC-140 CL	RC-140 OL
RC-160	2"	1.898"	1-1/4"	RC-160 CL	RC-160 OL
RC-200	2-1/2"	2.376"	1-1/2"	RC-200 CL	RC-200 OL

ROLLER CHAIN

### Stainless Steel "304" Series

CHAIN #	A	B	C	CONNECTING LINK #	OFFSET LINK #
RC--40 SS	1/2"	.463"	5/16"	RC--40SS CL	RC--40SS OL
RC--50 SS	5/8"	.579"	3/8"	RC--50SS CL	RC--50SS OL
RC--60 SS	3/4"	.673"	1/2"	RC--60SS CL	RC--60SS OL
RC--80 SS	1"	.935"	5/8"	RC--80SS CL	RC--80SS OL

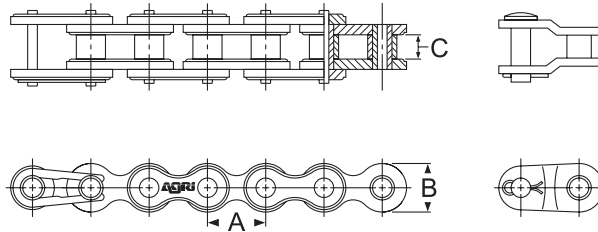
### Nickle Plated

CHAIN #	A	B	C	CONNECTING LINK #	OFFSET LINK #
RC-40 NP	1/2"	.463"	5/16"	RC-40NP CL	RC-40NP OL
RC-50 NP	5/8"	.579"	3/8"	RC-50NP CL	RC-50NP OL
RC-60 NP	3/4"	.673"	1/2"	RC-60NP CL	RC-60NP OL

**ANSI ROLLER CHAIN: IMPORT**

- Ten (10) feet per box (10')
- Chain is also available in reels.
- Ask your Agri Industrial Supply sales rep about cut-to-length sizes.

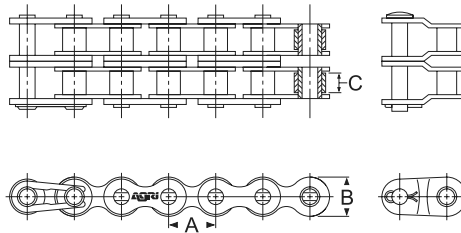
**Heavy Duty**



CHAIN #	A	B	C	CONNECTING LINK #	OFFSET LINK #
RC-50-H	5/8"	.579"	3/8"	RC-50-H CL	RC-50-H OL
RC-60-H	3/4"	.673"	1/2"	RC-60-H CL	RC-60-H OL
RC-80-H	1"	.935"	5/8"	RC-80-H CL	RC-80-H OL
RC-100-H	1-1/4"	1.165"	3/4"	RC-100-H CL	RC-100-H OL
RC-120-H	1-1/2"	1.376"	1"	RC-120-H CL	RC-120-H OL

**ROLLER CHAIN**

**Double Strand**

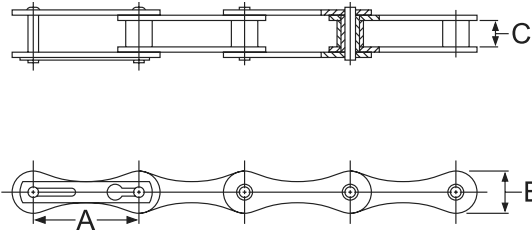


CHAIN #	A	B	C	CONNECTING LINK #	OFFSET LINK #
RC-35-2	3/8"	.340"	.188"	RC-35-2 CL	RC-35-2 OL
RC-40-2	1/2"	.463"	.313"	RC-40-2 CL	RC-40-2 OL
RC-50-2	5/8"	.579"	.375"	RC-50-2 CL	RC-50-2 OL
RC-60-2	3/4"	.673"	.500"	RC-60-2 CL	RC-60-2 OL
RC-80-2	1"	.935"	.625"	RC-80-2 CL	RC-80-2 OL
RC-100-2	1-1/4"	1.165"	.750"	RC-100-2 CL	RC-100-2 OL

**ANSI ROLLER CHAIN: IMPORT**

- Ten (10) feet per box (10')
- Chain is also available in reels.
- Ask your Agri Industrial Supply sales rep about cut-to-length sizes.

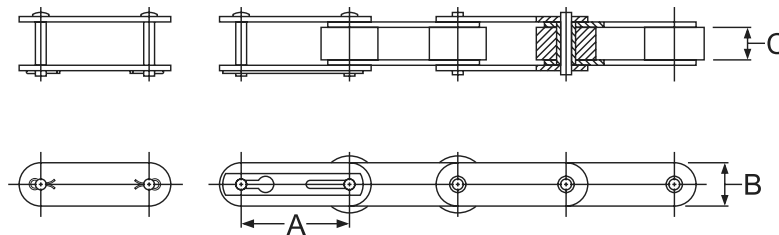
**Extended Pitch**



CHAIN #	A	B	C	CONNECTING LINK #	OFFSET LINK #
A2040	1"	.463"	5/16"	A2040 CL	A2040 OL
A2050	1-1/4"	.593"	3/8"	A2050 CL	A2050 OL
A2060	1-1/2"	.683"	1/2"	A2060 CL	A2060 OL

**Conveyor Chain**

ROLLER CHAIN



CHAIN #	A	B	C	CONNECTING LINK #	OFFSET LINK #
C2060-H	1-1/2"	.683"	1/2"	C2060-H CL	C2060-H OL
C2062-H	1-1/2"	.683"	1/2"	C2062-H CL	C2062-H OL
C2080-H	2"	.935"	2"	C2080-H CL	C2080-H OL
CA550	1.63"	3/4"	51/64"	CA550 CL	CA550 OL
CA557*	1.63"	3/4"	51/64"	CA557 CL	CA557 OL
CA620	1.654"	3/4"	63/64"	CA620 CL	CA620 OL

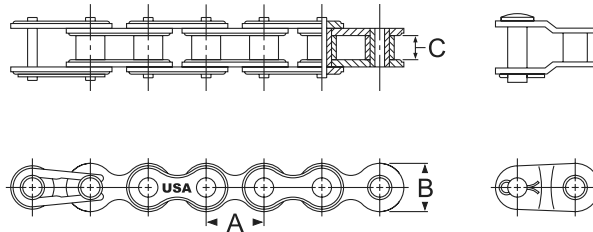
**\*0.007 ROLLER DIAMETER**

**ROLLER CHAIN: MADE IN USA**



- Ten (10) feet per box (10')
- Chain is also available in reels.
- Ask your Agri Industrial Supply sales rep about cut-to-length sizes.

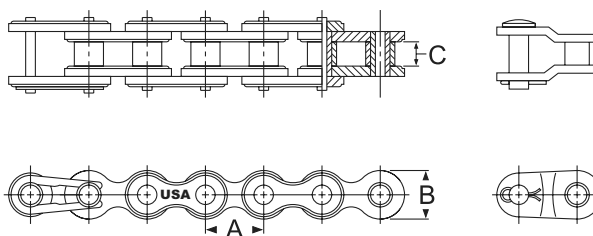
**Single Strand**



CHAIN #	A	B	C	CONNECTING LINK #	OFFSET LINK #
35-USA	3/8"	.340"	3/16"	35-USA CL	35-USA OL
40-USA	1/2"	.463"	1/4"	40-USA CL	40-USA OL
41-USA	1/2"	.386"	5/16"	41-USA CL	41-USA OL
50-USA	5/8"	.579"	3/8"	50-USA CL	50-USA OL
60-USA	3/4"	.673"	1/2"	60-USA CL	60-USA OL
80-USA	1"	.935"	5/8"	80-USA CL	80-USA OL
100-USA	1-1/4"	1.165"	3/4"	100-USA CL	100-USA OL
120-USA	1-1/2"	1.378"	1"	120-USA CL	120-USA OL
140-USA	1-3/4"	1.661"	1"	140-USA CL	140-USA OL
160-USA	2"	1.898"	1-1/4"	160-USA CL	160-USA OL

ROLLER CHAIN

**Heavy Duty**



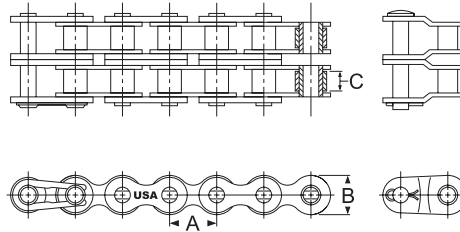
CHAIN #	A	B	C	CONNECTING LINK #	OFFSET LINK #
60-H USA	3/4"	.673"	1/2"	60-H USA CL	60-H USA OL
80-H USA	1"	.935"	5/8"	80-H USA CL	80-H USA OL
100-H USA	1-1/4"	1.165"	3/4"	100-H USA CL	100-H USA OL



**ROLLER CHAIN: MADE IN USA**

- Ten (10) feet per box (10')
- Chain is also available in reels.
- Ask your Agri Industrial Supply sales rep about cut-to-length sizes.

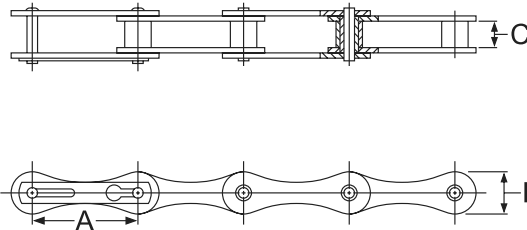
**Double Strand**



CHAIN #	A	B	C	CONNECTING LINK #	OFFSET LINK #
40-2 USA	1/2"	.463"	.313"	40-2 USA CL	40-2 USA OL
50-2 USA	5/8"	.579"	.375"	50-2 USA CL	50-2 USA OL
60-2 USA	3/4"	.673"	.500"	60-2 USA CL	60-2 USA OL
80-2 USA	1"	.935"	.625"	80-2 USA CL	80-2 USA OL

**Extended Pitch**

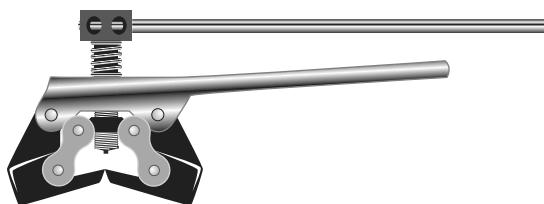
ROLLER CHAIN



CHAIN #	A	B	C	CONNECTING LINK #	OFFSET LINK #
A2040-USA	1"	.462"	5/16"	A2040-USA CL	A2040-USA OL
A2050-USA	1-1/4"	.593"	3/8"	A2050-USA CL	A2050-USA OL
A2060-USA	1-1/2"	.683"	1/2"	A2060-USA CL	A2060-USA OL



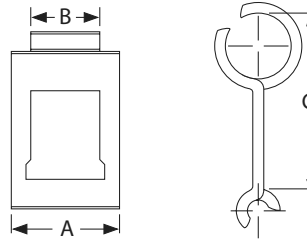
**CHAIN BREAKERS: MADE IN USA**



- CONNECTING LINK**
- #1 chain breaker. Cuts #25 - 60 chain.
  - #2 chain breaker. Cuts #60 - 100 chain.
- #1 chain breaker tip**
- #2 chain breaker tip**

**STEEL DETACHABLE CHAIN**

All chain sold in ten (10) foot lengths, shrink wrapped.



PART #	LINKS PER 10' (3048 MM)	A	B	C
25	133	45/64"	.422"	.904"
32	104	15/16"	.594"	1.157"
32W	104	1-1/16"	.594"	1.157"
33	86	15/16"	.610"	1.394"
42	87	1-7/32"	.781"	1.375"
50H	87	1-9/32"	.781"	1.375"
51	106	1-3/32"	.703"	1.133"
52	80	1-13/32"	.844"	1.508"
55 (45)	74	1-9/32"	.796"	1.630"
62	73	1-9/16"	.984"	1.654"
62A	72	1-15/16"	.984"	1.654"
62H	73	1-7/8"	.984"	1.654"
67H	52	1-7/8"	1.093"	2.313"
67XH	52	1-7/8"	1.093"	2.313"
67W	52	2-3/8"	1.093"	2.313"
S	41	1-15/16"	1.093"	2.906"
72	73	1-15/16"	2.025"	2.313"

ROLLER CHAIN

**COTTON MODULE CHAIN**

Attachment every fourth pitch.

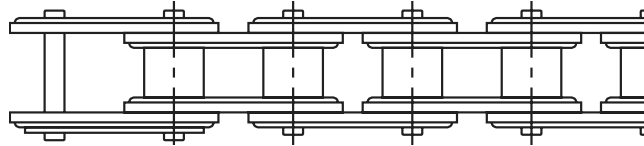


PART #	PITCH	ROLLER WIDTH	ROLLER DIAMETER
C2062H CB4EL	1-1/2"	1/2"	.875"

## REPLACEMENT CHAIN & SPROCKETS FOR JOHN DEERE® PLANTERS

Roller chain assemblies, drive wheel, and transmission drive idler sprockets for John Deere® 7000, 7100, 7200, 7240, 7300, and 7340 planters. Also fits Kinze.

### Import Chain



REPLACES JOHN DEERE PART #	AGRI PART #	DESCRIPTION	MODELS
AA20978	AI-7100	Seed meter drive	7000-7100
AA21483	AI-7115	Seed transmission drive	7000-7100
AA21484	AI-7110	Countershaft to seed transmission	7000-7100
AA21523	AI-7122	Dry fertilizer transmission chain	7000-7100
AA22372	AI-7124	Wheel drive, 6W, 8N, 12N	7000
AA28486	AI-7090	Wheel drive	7100
AA32249	AI-7170	Countershaft to seed transmission	7200-7300
AA32250	AI-7135	Seed transmission drive	7200-7300
AA32255	AI-7137	Countershaft to dry fertilizer transmission	7200-7300
AA32257	AI-7165	Liquid or dry fertilizer transmission	7200
AA33048	AI-7125	Herbicide and insecticide drive	7200-7300
AA33060	AI-7140	Vacuum seed meter	7200-7300
AA37980	AI-7155	Wheel drive	7200
AA42795	AI-7130	Plateless seed meter	7200-7300
AA43718	AI-7175	Herbicide and insect drive vacuum	7200-7300
AA43719	AI-7000	Herbicide and insecticide drive	7000-7100
AA43720	AI-7180	Roller unit drive	7200-7300
AA43721	AI-7185	Seed meter drive	1700
AH131563	AI-7145	Wheel drive	7300
M82326	AI-7160	Countershaft to fertilizer transmission	7200-7300
	AI-7150	Wing and drive	7200-7300

ROLLER CHAIN



**Sprockets: Made in USA**

JOHN DEERE PART #	AGRI PART #	DESCRIPTION
AA32729	AGRI-32729	Drive wheel idler sprocket
AA32776	AGRI-32776	Transmission drive wheel idler sprocket

**ADDITIONAL REPLACEMENT JOHN DEERE® PARTS LOCATED  
IN OUR NEW REPLACEMENT JOHN DEERE® SECTION**



**MISCELLANEOUS CHAIN ASSEMBLIES**
**IHC Planter Chain Assemblies for 800 & 900 Planters: Made in USA**


PART #	DESCRIPTION
IH400-USA	Plate drive chain
IH401-USA	Output speed chain
IH402-USA	Input speed chain
IH403-USA	Primary wheel drive chain
IH404-USA	Chemical box drive chain

**Replacement Parts for John Deere®: Made in USA**


PART #	DESCRIPTION
Hi-Cycle #1	Replaces 6000 John Deere® Hi-Cycle sprayer chain
AH66615	13-Pitches USA chain fits John Deere® cotton pickers
AN102383A	Fits John Deere® coupling chain 14 tooth sprocket coupler. Fits combines 3300, 4400, 4420, 6600, 6620, 7700, 7720, 8820, 9400, 9410, 9500, 9510, 9600, 9610. Also fits 40 and 90 series corn head.

**ROLLER CHAIN**
**Ditcher Chain: Made in USA**

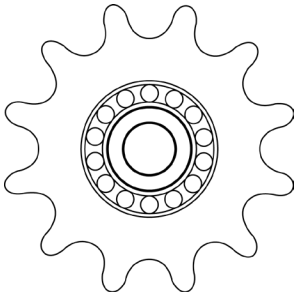

PART #	DESCRIPTION
DC #101-USA	Levco ditcher, same as HDA13
DC #102-USA	Glencoe ditcher
DC #103-USA	Amco ditcher
DC #104-USA	Levco ditcher, same as OSQ-13
DC #105-USA	Sidewinder
DC #106-USA	United Farm Tool
DC #107-USA	Hurricane Ditcher #15 and #20

**Ditcher Chain: Import**

PART #	DESCRIPTION
DC #201-Import	Levco Ditcher, same as HDA13
DC #202-Import	Glencoe ditcher
DC #203-Import	Amco ditcher
DC #204-Import	Levco ditcher, same as OSQ-13
DC #205-Import	Sidewinder
DC #206-Import	United Farm Tool
DC #207-Import	Hurricane Ditcher #15 and #20

## CAST IDLER SPROCKETS WITH HARDENED TEETH

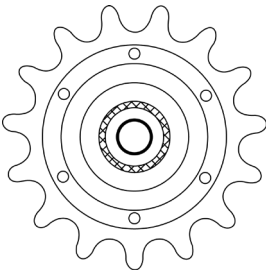
### Idler Sprockets



PART #	CHAIN SIZE	TEETH	BORE SIZE
IS35A18x1/2"	35	18	1/2"
IS35A18x5/8"	35	18	5/8"
IS40A17x1/2"	40 OR 41	17	1/2"
IS40A17x5/8"	40 OR 41	17	5/8"
IS50A13x1/2"	50	13	1/2"
IS50A13x5/8"	50	13	5/8"
IS50A15x1/2"	50	15	1/2"
IS50A15x5/8"	50	15	5/8"
IS50A17x1/2"	50	17	1/2"
IS50A17x5/8"	50	17	5/8"
IS60A11x1/2"	60	11	1/2"
IS60A11x5/8"	60	11	5/8"
IS60A13x1/2"	60	13	1/2"
IS60A13x5/8"	60	13	5/8"
IS60A15x1/2"	60	15	1/2"
IS60A15x5/8"	60	15	5/8"
IS80A11x3/4"	80	11	3/4"
IS80A12x3/4"	80	12	3/4"
IS100A12x1"	100	12	1"
O1008E11	5/8" to 1/2" reducer bushing		

ROLLER CHAIN

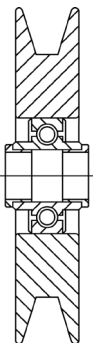
### Stamped Idler Sprockets



PART # & BORE SIZE	CHAIN SIZE	TEETH	AETNA #
40A18ID 1/2"	40 or 41	18	AG 2318-A
40A18ID 5/8"	40 or 41	18	AG 2318
50A17ID 1/2"	50	17	AG 2416-A
50A17ID 5/8"	50	17	AG 2416
60A15ID 1/2"	60	15	AG 2417-A
60A15ID 5/8"	60	15	AG 2417

### IDLER BELT PULLEYS

#### V-Belt Pressed Steel



PART #	O.D.	BORE SIZE	FITS BELT SIZE
8008	5"	1/2"	A or B
8010	5"	5/8"	A or B

#### V-Belt Solid Steel

PART #	O.D.	BORE SIZE	FITS BELT SIZE
4A08	4"	1/2"	A
4B08	4"	1/2"	B