

AGRI INDUSTRIAL SUPPLY, INC.

P.T.O. ASSEMBLIES & PARTS

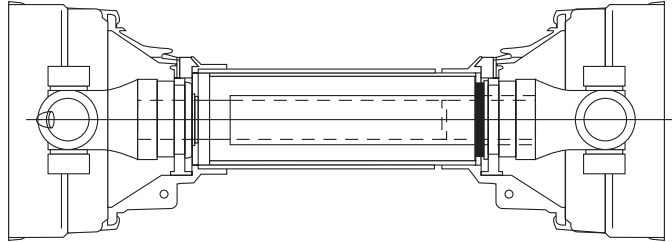
Inch Dimensions 171-182
Metric Dimensions 183-224

2020



INCH DIMENSION: NEAPCO & WEASLER P.T.O. ASSEMBLIES & ACCESSORIES

Competitor Interchangeability Chart

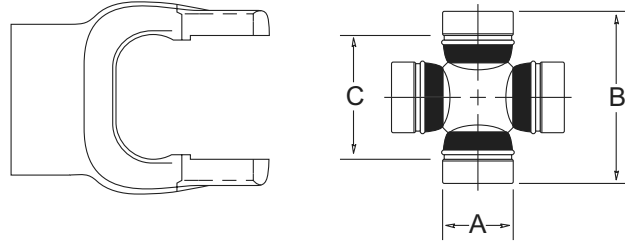


STANDARD SERIES				SUPPLIER				
ASAE	HP @ 540 RPM	HP @ 1000 RPM		NEAPCO	WALTERSCHEID AGMASTER	G&G	ROCKWELL	WEASLER
1	16	30	SERIES #	N1000	1000			
			KIT #	1-0170	5-170X			
1	16	30	SERIES #	L600		6N	L6N	6
			KIT #	1-1475		302-0600	CPL6R-40	200-0600
2	25	48	SERIES #	1200	1140	12N	L12N	12
			KIT #	1-1275	5-242X	303-1200	CPL12R	200-1200
3	35	48	SERIES #	1800				1800
			KIT #	1-1875				200-1875
3	35	56	SERIES #	2000	1240	14N	L16N	14
			KIT #	1-2075	5-243X	302-1400	CPL14R	200-1400
4	58	93	SERIES #	2200	1340	35N	35N	35
			KIT #	2-2275	5-243X	302-3500	CP35R	200-3500
5	80	120	SERIES #	N44		44R	44R	44
			KIT #	3-0044		302-4400	CP44R	200-4400
6	100	150	SERIES #	2600	1480			2600
			KIT #	3-0188	5-188X			200-2600
6	100	150	SERIES #	N55		5N	55N	55
			KIT #	3-0045		302-5500	CP55N	20-5500

PTO ASSEMBLIES & COMPONENTS

NEAPCO P.T.O. COMPONENTS

Cross & Bearing Kits: Inch Dimension

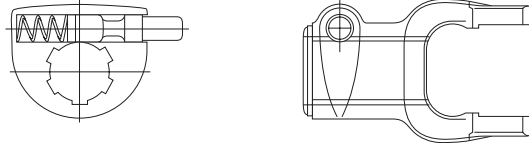


AGRI AND NEAPCO #	WEASLER #	SERIES	A. BEARING DIAMETER	B. OVERALL LENGTH	C. LOCK-UP DIMENSIONS
1-1475 (6R)	200-0600	6	31/32"	2-5/16"	1-29/64"
1-0170	200-1000	N1000	15/16"	2-5/16"	1-1/2"
1-1275 (12R)	200-1200	12	1-1/16"	2-9/16"	1-13/16"
1-1875	200-1875	1800	1"	3-1/8"	2-11/32"
1-2075 (14R)	200-1400	14	1-1/8"	2-5/32"	2-5/8"
2-2275 (35R)	200-3500	35	1-1/4"	3-7/32"	3-7/32"
3-0044 (44R)	200-4400	44	1-5/16"	4-1/16"	2-51/64"
3-0188	200-2600	2600	1-3/8"	4-3/16"	4-3/16"
3-0045 (55R)	200-5500	55	1-17/32"	4-5/16"	4-5/16"

PTO ASSEMBLIES & COMPONENTS

TRACTOR YOKES: INCH DIMENSION

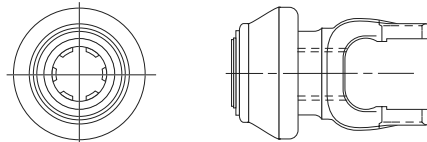
Quick Disconnect Tractor Yokes: Pin Type



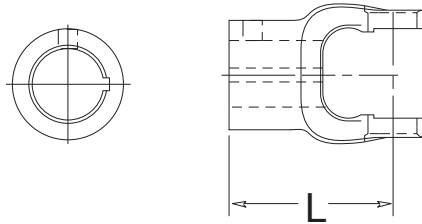
PART #	WEASLER #	SERIES	BORE	PIN REPAIR KITS	
				NEAPCO #	WEASLER #
16-6409	102-0606	6	1-3/8" - 6 spl	56-1857	1300-2006
16-0621	102-0621	6	1-3/8" - 21 spl	56-1857	1300-2021
12-1190	102-1206	12	1-3/8" - 6 spl	56-1857	1300-2006
12-1193	102-1221	12	1-3/8" - 21 spl	56-1857	1300-2021
20-9309	102-1406	14	1-3/8" - 6 spl	56-1857	1300-2006
20-9325	102-1421	14	1-3/8" - 21 spl	56-1857	1300-2021
22-2312	102-3506	35	1-3/8" - 6 spl	56-1857	1300-2006
22-2317	102-3521	35	1-3/8" - 21 spl	56-1857	1300-2021
	102-3528	35	1-3/4" - 6 spl		1300-2806
	102-3520	35	1-3/4" - 20 spl		1300-2020
44-2220	102-4406	44	1-3/8" - 6 spl	56-1857	1300-2006
44-2201	102-4421	44	1-3/8" - 21 spl	56-1857	1300-2021
44-6300	102-4420	44	1-3/4" - 20 spl	56-2446	1300-2020
55-9306	102-5506	55	1-3/8" - 6 spl	56-1857	1300-2006
55-9321	102-5521	55	1-3/8" - 21 spl	56-2446	1300-2021
55-9320	102-5520	55	1-3/4" - 20 spl	56-2446	1300-2020

PTO ASSEMBLIES &
COMPONENTS

Quick Disconnect Tractor Yokes: Spring-Lock Collar Type



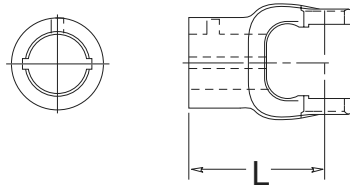
PART #	WEASLER PART #	SERIES	BORE
16-0606	100-0606	6	1-3/8" - 6 spl
12-2330	100-1206	12	1-3/8" - 6 spl
12-2321	100-1221	12	1-3/8" - 21 spl
20-9330	100-1406	14	1-3/8" - 6 spl
20-9321	100-1421	14	1-3/8" - 21 spl
22-2330	101-3506	35	1-3/8" - 6 spl
22-3521	101-3521	35	1-3/8" - 21 spl
22-1319	101-3520	35	1-3/4" - 20 spl
44-4406	101-4406	44	1-3/8" - 6 spl
44-4421	101-4421	44	1-3/8" - 21 spl
44-4420	101-4420	44	1-3/4" - 20 spl

IMPLEMENT YOKES: INCH DIMENSION
Round Implement Yokes


PART #	WEASLER PART #	SERIES	BORE	LENGTH (L)	KEYWAY
16-6111	800-0612	6	3/4"	2-1/2"	3/16"
16-6113	800-0614	6	7/8"	2-1/2"	1/4"
16-6114	800-0615	6	15/16"	2-1/2"	1/4"
16-6115	800-0616	6	1"	2-1/2"	1/4"
16-6116	800-0618	6	1-1/8"	2-1/2"	5/16"
16-6118	800-0620	6	1-1/4"	2-1/2"	5/16"
12-1134	800-1215	12	15/16"	2-3/4"	1/4"
12-1115	800-1216	12	1"	3-1/2"	1/4"
12-1326	800-1218	12	1-1/8"	3-1/2"	1/4"
12-1176	800-1220	12	1-1/4"	3-1/2"	1/4"
12-1120	800-1222	12	1-3/8"	3-1/2"	5/16"
12-1175	800-1224	12	1-1/2"	2-1/2"	3/8"
20-9115	800-1416	14	1"	3-3/4"	1/4"
20-9117	800-1418	14	1-1/8"	3-3/4"	5/16"
20-9302	800-1420	14	1-1/4"	3-3/4"	1/4"
20-9120	800-1422	14	1-3/8"	3-3/4"	5/16"
20-9154	800-1423	14	1-7/16"	3-3/4"	3/8"
20-9307	800-1424	14	1-1/2"	3-3/4"	3/8"
22-1131	800-3516	35	1"	4-3/16"	1/4"
22-1132	800-3518	35	1-1/8"	4-3/16"	1/4"
22-1129	800-3519	35	1-3/16"	4-3/16"	1/4"
22-1133	800-3520	35	1-1/4"	4-3/16"	1/4"
22-1118	800-3522	35	1-3/8"	4-3/16"	5/16"
22-1178	800-3523	35	1-7/16"	4-3/16"	3/8"
22-1120	800-3524	35	1-1/2"	4-3/16"	3/8"
22-1316	800-3528	35	1-3/4"	4-3/8"	3/8"
44-2360	800-4423	44	1-7/16"	4-1/8"	3/8"
44-2460	800-4424	44	1-1/2"	4-1/8"	3/8"
44-2820	800-4428	44	1-3/4"	4-1/8"	3/8"
55-2410	800-5524	55	1-1/2"	4-5/8"	3/8"
55-2800	800-5528	55	1-3/4"	4-1/16"	3/8"
55-3240	800-5532	55	2"	5-5/8"	1/2"

IMPLEMENT YOKES: INCH DIMENSION

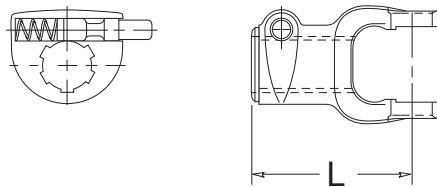
Round, Double Keyway



PART #	WEASLER PART #	SERIES	BORE	LENGTH (L)	KEYWAY
16-6213	806-0614	6	7/8"	2-1/2"	3/16" - 1/4"
16-6215	806-0616	6	1"	2-1/2"	3/16" - 1/4"
16-6216	806-0618	6	1-1/8"	2-1/2"	1/4" - 5/16"
16-6218	806-0620	6	1-1/4"	2-1/2"	1/4" - 5/16"
12-1215	806-1216	12	1"	3-1/2"	3/16" - 1/4"
12-1216	806-1218	12	1-1/8"	3-1/2"	1/4" - 5/16"
12-1218	806-1220	12	1-1/4"	3-1/2"	1/4" - 5/16"
20-9216	806-1418	14	1-1/8"	3-3/4"	1/4" - 5/16"
20-9217	806-1419	14	1-3/16"	3-3/4"	1/4" - 5/16"
20-9218	806-1420	14	1-1/4"	3-3/4"	1/4" - 5/16"
22-1218	806-3520	35	1-1/4"	4-3/16"	1/4" - 5/16"
22-1219	806-3522	35	1-3/8"	4-3/16"	5/16" - 3/8"
44-2045	806-4420	44	1-1/4"	4-1/8"	1/4" - 5/16"
44-2256	806-4422	44	1-3/8"	4-1/8"	1/4" - 5/16"
44-2456	806-4424	44	1-1/2"	4-1/8"	5/16" - 3/8"

PTO ASSEMBLIES & COMPONENTS

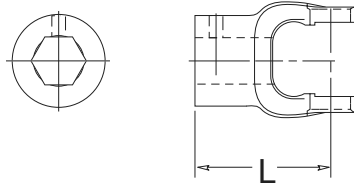
Quick Disconnect Implement Yokes: Pin Type



PART #	SERIES	BORE	LENGTH (L)	PIN REPAIR KITS AGRI PART #
16-6407	6	1-3/8" - 6	3-9/16"	56-1857
12-1300	12	1-3/8" - 6	4-1/16"	56-1857
12-1350	12	1-3/8" - 21	4-1/16"	56-1857
20-9319	14	1-3/8" - 6	4-1/4"	56-1857
20-9324	14	1-3/8" - 21	4-1/4"	56-1857
22-2315	35	1-3/8" - 6	4-13/16"	56-1857
22-2316	35	1-3/8" - 21	4-13/16"	56-1857

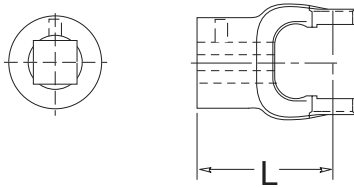
IMPLEMENT YOKES: INCH DIMENSION

Hexagonal Implement Yokes



PART #	WEASLER #	SERIES	BORE	LENGTH (L)
16-6303	805-0614	6	7/8"	2-1/2"
12-1328	805-1218	12	1-1/8"	3-1/2"
20-9121	805-1418	14	1-1/8"	3-7/8"

Square Implement Yokes

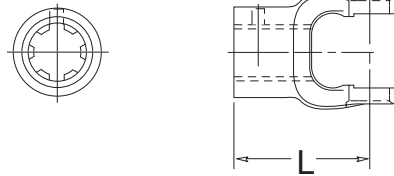


PART #	WEASLER #	SERIES	BORE	LENGTH (L)
16-6171	804-0612	6	3/4"	2-1/2"
16-6302	804-0614	6	7/8"	2-1/2"
16-6303	804-0616	6	1"	2-1/2"
16-6138	804-0618	6	1-1/8"	2-1/2"
16-6127	804-0620	6	1-1/4"	2-1/2"
12-1170	804-1214	12	7/8"	2-3/4"
12-1163	804-1216	12	1"	3-1/2"
12-1148	804-1218	12	1-1/8"	3-1/2"
12-1321	804-1220	12	1-1/4"	2-3/4"
20-9310		14	7/8"x1" double sq	3-3/4"
20-9183	804-1418	14	1-1/8"	3-3/4"
20-9127	804-1420	14	1-1/4"	3-9/16"
22-1125	804-3516	35	1"	4-3/16"
22-1124	804-3518	35	1-1/8"	4-3/16"
22-1190	804-3519	35	1-3/16"	4-1/2"
22-1128	804-3520	35	1-1/4"	4-1/8"
22-1130	804-3524	35	1-1/2"	4-1/8"
22-1126	804-3526	35	1-5/8"	4-1/8"
44-1826	804-4418	44	1-1/8"	4-1/8"

PTO ASSEMBLIES & COMPONENTS

IMPLEMENT YOKES: INCH DIMENSION

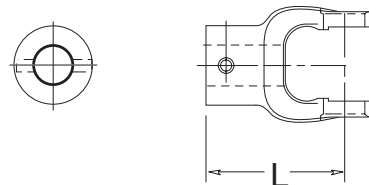
Spline Bore Implement Yokes with Pin Hole



PART #	WEASLER #	SERIES	BORE	LENGTH (L)
16-6134	801-0618	6	1-1/8" - 6 spl	2-1/2"
16-6187	801-0606	6	1-3/8" - 6 spl	2-1/2"
12-1180	801-1218	12	1-1/8" - 6 spl	3-1/2"
12-1172	801-1206	12	1-3/8" - 6 spl	3-1/2"
12-1315	801-1221	12	1-3/8" - 21 spl	3-1/2"
20-9180	801-1418	14	1-1/8" - 6 spl	3-7/16"
20-9132	801-1406	14	1-3/8" - 6 spl	3-3/4"
20-9193	801-1421	14	1-3/8" - 21 spl	3-3/4"
22-1142		35	1-1/8" - 6 spl	4-3/16"
22-1134	801-3506	35	1-3/8" - 6 spl	4-3/16"
22-1330	801-3521	35	1-3/8" - 21 spl	4-3/16"
44-2206	801-4406	44	1-3/8" - 6 spl	4-1/8"
44-2221	801-4421	44	1-3/8" - 21 spl	4-1/8"

PTO ASSEMBLIES &
COMPONENTS

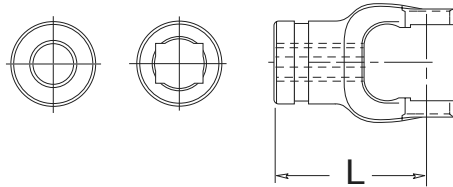
Shear Pin Implement Yokes



PART #	WEASLER #	SERIES	BORE	LENGTH (L)
16-6516	802-0616	6	1"	2-1/2"
16-6513	802-0618	6	1-1/8"	2-1/2"
16-6165	802-0620	6	1-1/4"	2-1/2"
12-1319	802-1216	12	1"	3"
12-1302	802-1218	12	1-1/8"	3-1/2"
12-1330	802-1220	12	1-1/4"	3"
20-9318	802-1418	14	1-1/8"	3-3/4"
20-9317	802-1420	14	1-1/4"	3-3/4"
20-9160	802-1422	14	1-3/8"	3-1/2"
20-9320	802-1424	14	1-1/2"	3-3/4"
22-1145	802-3520	35	1-1/4"	4-3/16"
22-1337	802-3522	35	1-3/8"	4-3/16"
22-1162	802-3524	35	1-1/2"	4-3/16"

IMPLEMENT YOKES: INCH DIMENSION

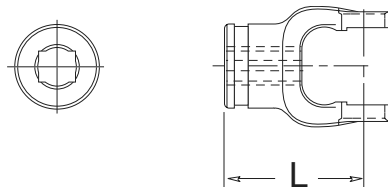
Tube Weld Yokes



PART #	WEASLER #	SERIES	BORE	TUBE SIZE	LENGTH (L)
16-6131	700-0600	6	1" x 1-1/8"	1" x 1-1/8" rect	2-3/4"
16-6132	701-0600	6	1-3/16" rd	1-5/8" x 16 ga rd	3"
12-1318	700-1200	12	1-9/32" x 1-13/32"	1-1/4" x 1-3/8" rect	2-15/16"
12-1334	701-1200	12	1-1/2" rd	2" x 14 ga rd	3-3/4"
20-9131	701-1400	14	1-1/2" rd	2" x 14 ga rd	4"
20-9313	700-1400	14	1-9/32" x 1-13/32"	1-1/4" x 1-3/4" rect	3-3/16"
22-1343	703-3500	35	1-5/8" rd	2-1/4" x 11 ga rd	4-1/2"
22-1325	701-3500	35	1-5/8" rd	2-1/8" x 11 ga rd	4-1/2"
22-1307	702-3500	35	1-5/8" rd	2-1/8" x 14 ga rd	4-1/2"
44-2200	701-4400	44	1-7/8" rd	2-1/2" x 10 ga rd	4-7/8"
55-3640	701-5500	55	---	2-1/2" x 10 ga rd	4-5/8"

PTO ASSEMBLIES & COMPONENTS

Shaft Weld Yokes

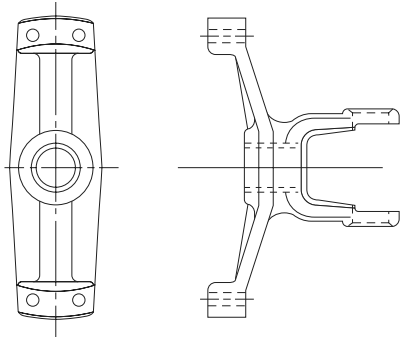


PART #	WEASLER #	SERIES	BORE	LENGTH (L)
16-6129	300-0600	6	3/4" x 7/8"	2-1/2"
12-1340	300-1200	12	1" x 1/8"	2-15/16"
20-9126	300-1400	14	1" x 1/8"	3-3/16"
20-9129*		14	1" x 1/8"	3-3/16"
22-1344	300-3500	35	1-3/16" sq	3-5/8"
44-2100	300-4400	44	1-5/16" sq	4-1/8"
55-2130	300-5500	55	1-5/16" sq	4-1/8"

***COMMON PHASING FOR WEASLER MANUFACTURED DRIVES. WEASLER DRIVES ARE PHASED 90° OFF FROM NEAPCO DRIVE AND THEREFORE ARE NOT INTERCHANGEABLE IN HALF-SHAFT SUB-ASSEMBLIES.**

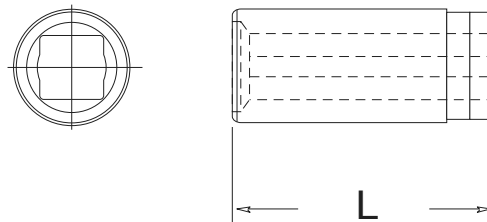
NEAPCO P.T.O. COMPONENTS: INCH DIMENSION

Torque Limiters



PART #	WEASLER #	SERIES
48-9202	803-1400	14
48-1181	803-3500	35
803-4400	803-4400	44

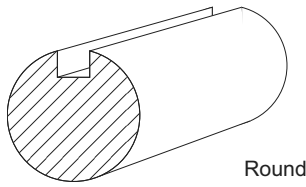
Slip Sleeves



PART #	WEASLER #	SERIES	INSIDE DIAMETER	TUBE SIZE	LENGTH (L)
53-0635	510-0600	6	3/4" x 7/8"	1 5/8" x 16 ga rd	4"
53-2034	500-1400	12	1" x 1-1/8"	2" x 14 ga	5"
53-2034	500-1400	14	1" x 1-1/8"	2" x 14 ga	5"
53-2434	501-3500	35	1-3/16" sq	2 1/4" x 11 ga	5"
53-2435	500-3500	35	1-3/16" sq	2 1/8" x 11 ga	5"
53-3500	501-3500	35	1-3/16" sq	2 1/8" x 14 ga	5"
53-2434		44	1-3/16" sq	2 1/4" x 11 ga	5"
53-2644		44	1-5/16" sq	2 3/4" x 12 ga	5"
53-2643	500-4400	44	1-5/16" sq	2 1/2" x 10 ga	5"

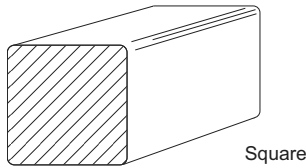
PTO ASSEMBLIES & COMPONENTS

NEAPCO P.T.O. COMPONENTS: INCH DIMENSION



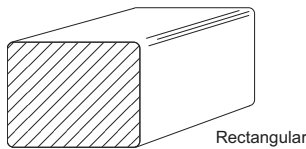
Solid Shafting: Round, 72" Length, Full Length Keyway

PART #	TYPE	KEYWAY
71-0750	3/4" rd	3/16"
71-0813	13/16" rd	1/4"
71-0875	7/9" rd	1/4"
71-1000	1" rd	1/4"
71-1250	1-1/4" rd	5/16"



Solid Shafting: Square, 72" Length

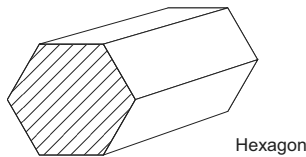
PART #	WEASLER #	SHAFT SIZE
72-0750	400-0012	3/4" sq
72-0875		7/8" sq
72-1000	400-0016	1" sq
73-1188	400-0019	1-3/16" sq
73-1250	400-0020	1-1/4" sq
73-1313	400-0021	1-5/16" sq



Solid Shafting: Rectangular, 72" Length

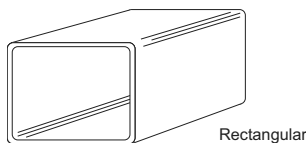
PART #	DIMENSIONS	USE WITH SERIES
73-0750	3/4" x 7/8"	6, Spicer 1000
73-1001	1" x 1-1/8"	12, 14

PTO ASSEMBLIES & COMPONENTS



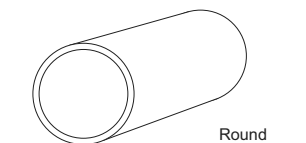
Solid Shafting: Hexagonal, 72" Length

PART #	DIMENSIONS
72-0888	7/8" HEX
72-1002	1" HEX
72-1125	1-1/8" HEX



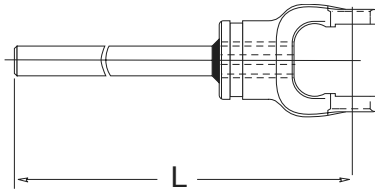
Solid Tubing: Rectangular & Round, 72" Length

PART #	WEASLER #	TYPE	DIMENSIONS	USE WITH SERIES
70-1001	600-1618	Rectangle	1" x 1-1/8"	6, Spicer 1000
70-1250	600-2022	Rectangle	1-1/4" x 1-3/8"	12, 14
70-1625		Round	1-5/8" x 16 ga	6, Spicer 1000
70-2000		Round	2" x 14 ga	12, 14, Spicer 1000
70-2125	602-3500	Round	2-1/8" x 11 ga	35
70-2250		Round	2-1/4" x 11 ga	35, 44
70-2500	602-4400	Round	2-1/2" x 10 ga	44, 55
70-2750	602-2600	Round	2-3/4" x 12 ga	44, 2600



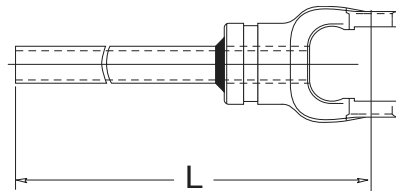
NEAPCO P.T.O. COMPONENTS: INCH DIMENSION

Male Shaft with Yoke



PART #	SERIES	LENGTH TO END (L)	OVERALL DRIVELINE LENGTH	DESCRIPTION
65-1639	6	36"	48"	3/4" x 7/8" rectangular SHAFT
65-2839	12	36"	48"	1" x 1-1/8" rectangular SHAFT
65-2840	14	35-3/4"	48"	1" x 1-1/8" rectangular SHAFT
65-2639	35	35-7/8"	48"	1-3/16" square SHAFT
65-4435	44	35-3/8"	48"	1-5/16" square SHAFT

Female Tube with Yoke

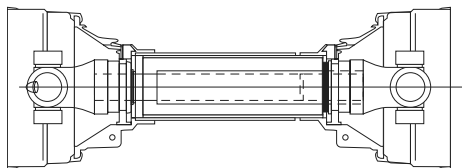


PART #	SERIES	LENGTH TO END (L)	OVERALL DRIVELINE LENGTH	DESCRIPTION
64-1639	6	36"	48"	1" x 1-1/8" O.D. rectangular TUBE
64-2739	12	36"	48"	1-1/4" x 1-3/8" O.D. rectangular TUBE
64-2740	14	36-9/16"	48"	2" O.D. TUBE with 1" x 1-1/8" slip sleeve
64-2539	35	35-1/8"	48"	2-1/8" O.D. TUBE with 1-3/16" slip sleeve
64-4435	44	34-5/8"	48"	2-1/2" O.D. TUBE with 1-5/16" slip sleeve

PTO ASSEMBLIES & COMPONENTS

Complete Drive Shaft: 48' Long

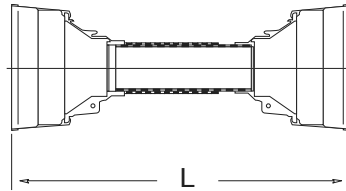
Complete with plastic shield and cross & bearing kits. Does **NOT** come with implement or tractor yoke ends.



PART #	SERIES
58-1639	6
58-1239	12
58-2040	14
58-2239	35
58-4439	44

NEAPCO P.T.O. COMPONENTS: INCH DIMENSION

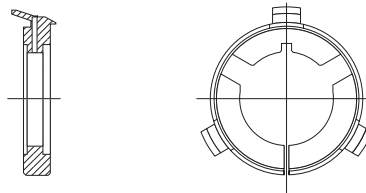
Plastic Shields



PART #	SERIES	OVERALL DRIVELINE LENGTH	BELL OUTSIDE DIAMETER
69-0648	6	60"	5-1/4"
69-1248	12	60"	6-1/8"
69-1248	14	60"	6-1/8"
69-2248	35	60"	7-1/6"
69-2648	44	60"	8"

NOTE: SHIELD BEARINGS ARE NOT INCLUDED! SEE BELOW FOR BEARINGS. SHIELD CAN BE CUT TO FIT 36" OR 48" DRIVES.

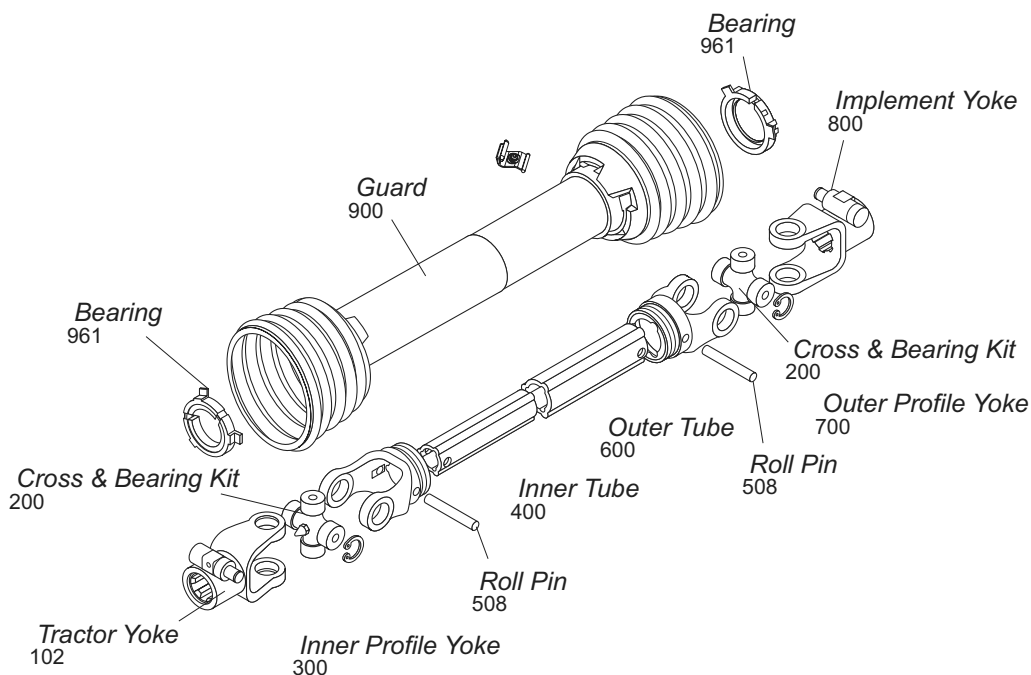
Shield Bearings



PART #	SERIES	USE WITH SHIELD #
56-1600	6	69-0648
56-2000	12	69-1248
56-2000	14	69-1248
56-2200	35	69-2248
56-0844	44	69-2648

PTO ASSEMBLIES & COMPONENTS

**WEASLER, NEAPCO, EUROCARDAN METRIC P.T.O. ASSEMBLIES & COMPONENTS:
INTERCHANGES WITH BONDIOLI, PAVESI, & WALTERSCHEID**

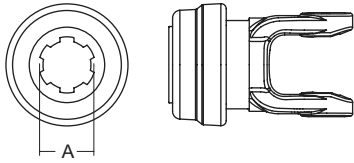


SERIES	PAGES	SERIES	PAGES	SERIES	PAGES
1	227-228	7N	239-240	2500	251-252
2	229-230	8	241-242	2600	253-254
3	231-232	2100/100	243-244	2380 CV	255
4	233-234	2200/200	245-246	2380	256
5	235-236	2300/210	247-248	2480	257-258
6	237-238	2400	249-250	2580	259-260

**PTO ASSEMBLIES &
COMPONENTS**

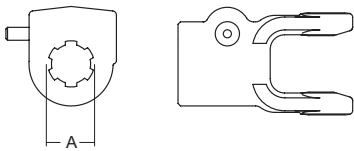
**WEASLER, NEAPCO, EUROCARDAN METRIC P.T.O. ASSEMBLIES & COMPONENTS:
INTERCHANGES WITH BONDIOLI & PAVESI**

1 SERIES



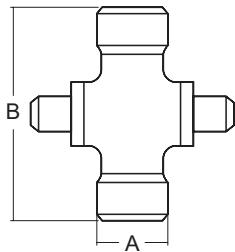
Tractor Yoke: Safety Slide Lock

PART #	A. BORE
101-6106	1-3/8" x 6 spl
101-6121	1-3/8" x 21 spl



Tractor Yoke: Quick Disconnect

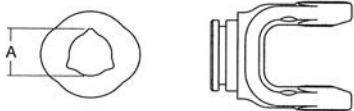
PART #	A. BORE
102-6118	1-1/8" x 6 spl
102-6106	1-3/8" x 6 spl
102-6121	1-3/8" x 21 spl



**Cross & Bearing Kit: R-Kit
(Snap Ring Located In Yoke)**

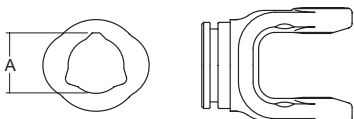
PART #	A	B
200-6154	22mm (7/8")	54mm (2-1/8")

PTO ASSEMBLIES & COMPONENTS



**Inner Profile Yoke with Bearing Groove
(Guard Must Rotate Freely On Yoke)**

PART #	A. BORE
300-6126	27.5mm (1-1/16")

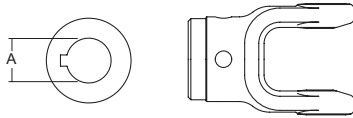


**Outer Profile Yoke with Bearing Groove
(Guard Must Rotate Freely On Yoke)**

PART #	A. BORE
700-6133	33mm (1-5/16")

**WEASLER, NEAPCO, EUROCARDAN METRIC P.T.O. ASSEMBLIES & COMPONENTS:
INTERCHANGES WITH BONDIOLI & PAVESI**

1 SERIES



Implement Yoke: Round Bore with Keyway & Set Screw

PART #	A. BORE	B. KEYWAY
800-6108	25.4mm (1")	1/4"
800-6110	31.75mm (1-1/4")	1/4"
800-6130	30mm (1-3/16")	25/64"



Inner Tube

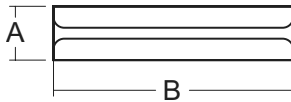
PART #	LENGTH
400-6126	1.5m (59-1/16")
404-6126	1.0m (39-3/8")



Outer Tube

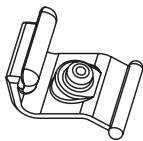
PART #	LENGTH
600-6133	1.5m (59-1/16")
604-6133	1.0m (39-3/8")

PTO ASSEMBLIES & COMPONENTS



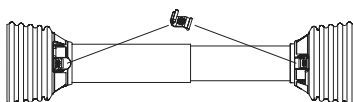
Roll Pin

PART #	A	B
508-0850	8mm (5/16")	50mm (1-31/32")



Easy Lock™ Replacement Kit

PART #	DESCRIPTION
13005000	4 per kit

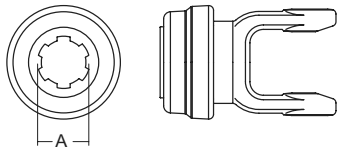


**Guard
(Order Bearings as Required)**

PART #	OVERALL DRIVE LENGTH	BEARING KIT (2 PER KIT)
900-2548	48"	961-5029
900-2560	60"	961-5029

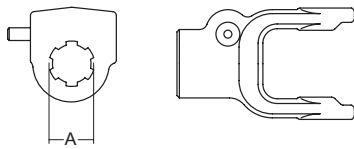
**WEASLER, NEAPCO, EUROCARDAN METRIC P.T.O. ASSEMBLIES & COMPONENTS:
INTERCHANGES WITH BONDIOLI & PAVESI**

2 SERIES



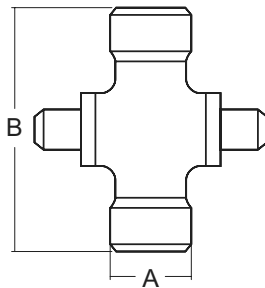
Tractor Yoke: Safety Slide Lock

PART #	A. BORE
101-8206	1-3/8" x 6 spl
101-8221	1-3/8" x 21 spl



Tractor Yoke: Quick Disconnect

PART #	A. BORE
102-8218	1-1/8" x 6 spl
102-8206	1-3/8" x 6 spl
102-8221	1-3/8" x 21 spl

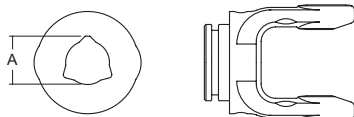


**Cross & Bearing Kit: R-Kit
(Snap Ring Located In Yoke)**

PART #	A. BORE	B. KEYWAY
200-8261	23.8mm (15/16")	61.2mm (2-13/32")

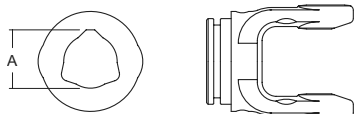
PTO ASSEMBLIES & COMPONENTS

**Inner Profile Yoke with Bearing Groove
(Guard Must Rotate Freely On Yoke)**



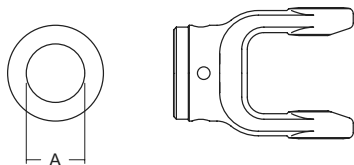
PART #	A. BORE
300-6229	29.8mm (1-11/64")

**Outer Profile Yoke with Bearing Groove
(Guard Must Rotate Freely On Yoke)**



PART #	A. BORE
700-6236	36.8mm (1-29/64")

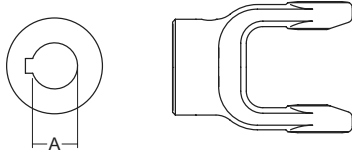
Implement Yoke: Shear Pin Yoke with Pinhole



PART #	A. BORE
802-8220	31.8mm (1-1/4") rd
802-8222	34.9mm (1-3/8") rd

**WEASLER, NEAPCO, EUROCARDAN METRIC P.T.O. ASSEMBLIES & COMPONENTS:
INTERCHANGES WITH BONDIOLI & PAVESI**

2 SERIES



Implement Yoke: Round Bore with Keyway & Set Screw

PART #	A. BORE	B. KEYWAY
800-8225	25mm (63/64")	8mm (5/16")
800-8208	25mm (1")	6.35mm (1/4")
800-8218	28.6mm (1-1/8")	6.35mm (1/4")
800-8230	30mm (1-3/16")	8mm (5/16")
800-8210	31.8mm (1-1/4")	6.35mm (1/4")
800-8220	31.8mm (1-1/4")	8mm (5/16")
800-8211	34.9mm (1-3/8")	8mm (5/16")



Inner Tube

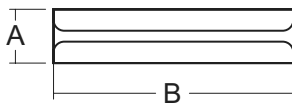
PART #	LENGTH
400-6229	1.5m (59-1/16")
404-6229	1.0m (39-3/8")



Outer Tube

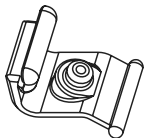
PART #	LENGTH
600-6236	1.5m (59-1/16")
604-6236	1.0m (39-3/8")

PTO ASSEMBLIES & COMPONENTS



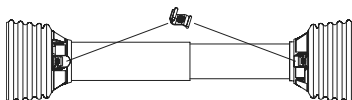
Roll Pin

PART #	A	B
508-0860	8mm (5/16")	60mm (2-3/8")



Easy Lock™ Replacement Kit

PART #	DESCRIPTION
13005000	4 per kit

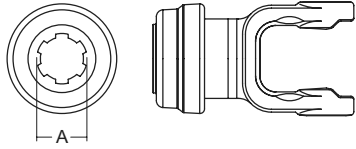


**Guard
(Order Bearings as Required)**

PART #	OVERALL DRIVE LENGTH	BEARING KIT (2 PER KIT)
900-2548	48"	961-2502
900-2560	60"	961-2502

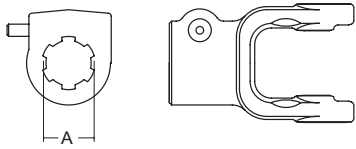
**WEASLER, NEAPCO, EUROCARDAN METRIC P.T.O. ASSEMBLIES & COMPONENTS:
INTERCHANGES WITH BONDIOLI & PAVESI**

3 SERIES



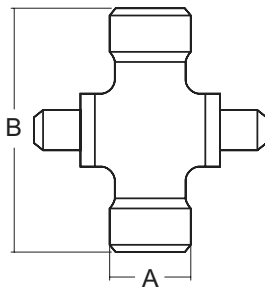
Tractor Yoke: Safety Slide Lock

PART #	A. BORE
101-8306	1-3/8" x 6 spl
101-8321	1-3/8" x 21 spl



Tractor Yoke: Quick Disconnect

PART #	A. BORE
102-8306	1-3/8" x 6 spl
102-8321	1-3/8" x 21 spl

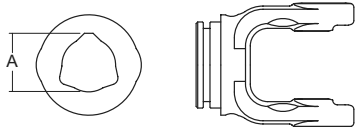


**Cross & Bearing Kit: R-Kit
(Snap Ring Located In Yoke)**

PART #	A. BORE	B. KEYWAY
200-8370	27mm (1-1/16")	70mm (2-3/4")

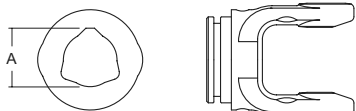
PTO ASSEMBLIES & COMPONENTS

**Inner Profile Yoke with Bearing Groove
(Guard Must Rotate Freely On Yoke)**



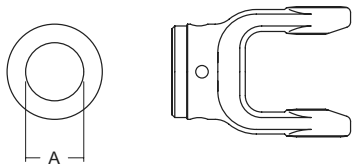
PART #	A. BORE
300-6336	36.8mm (1-29/64")

**Outer Profile Yoke with Bearing Groove
(Guard Must Rotate Freely On Yoke)**



PART #	A. BORE
700-6343	44mm (1-47/64")

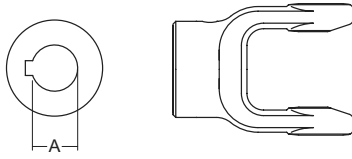
Implement Yoke: Shear Pin Yoke with Pinhole



PART #	A. BORE
802-8310	31.8mm (1-1/4")
802-8325	25mm (63/64")
802-8330	30mm (1-3/16")
802-8335	34.9mm (1-3/8")

**WEASLER, NEAPCO, EUROCARDAN METRIC P.T.O. ASSEMBLIES & COMPONENTS:
INTERCHANGES WITH BONDIOLI & PAVESI**

3 SERIES



Implement Yoke: Round Bore with Keyway & Set Screw

PART #	A. BORE	B. KEYWAY
800-8310	31.8mm (1-1/4")	6.4mm (1/4")
800-8311	34.9mm (1-3/8")	8mm (5/16")
800-8325	25mm (63/64")	8mm (5/16")
800-8330	30mm (1-3/16")	8mm (5/16")



Inner Tube

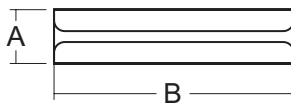
PART #	LENGTH
600-6236	1.5m (59-1/16")
604-6236	1.0m (39-3/8")



Outer Tube

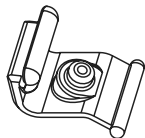
PART #	LENGTH
600-6343	1.5m (59-1/16")
604-6343	1.0m (39-3/8")

PTO ASSEMBLIES & COMPONENTS



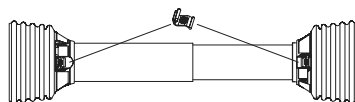
Roll Pin

PART #	A	B
508-0860	8mm (5/16")	60mm (2-23/64")



Easy Lock™ Replacement Kit

PART #	DESCRIPTION
13005000	4 per kit

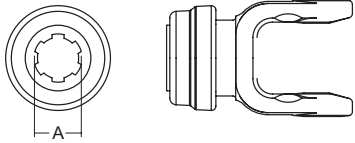


**Guard
(Order Bearings as Required)**

PART #	OVERALL DRIVE LENGTH	BEARING KIT (2 PER KIT)
900-2548	48"	961-2534
900-2560	60"	961-2534

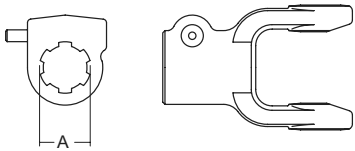
**WEASLER, NEAPCO, EUROCARDAN METRIC P.T.O. ASSEMBLIES & COMPONENTS:
INTERCHANGES WITH BONDIOLI & PAVESI**

4 SERIES



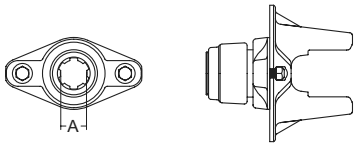
Tractor Yoke: Safety Slide Lock

PART #	A. BORE
101-8406	1-3/8" x 6 spl
101-8421	1-3/8" x 21 spl



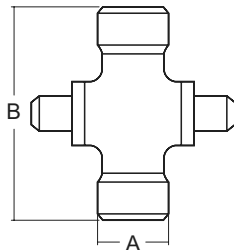
Tractor Yoke: Quick Disconnect

PART #	A. BORE
102-8406	1-3/8" x 6 spl
102-8418	1-1/8" x 6 hex
102-8421	1-3/8" x 21 spl



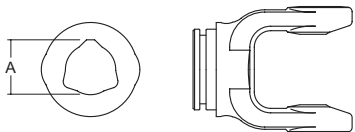
Tractor Yoke: Quick Ball Shear

PART #	A. BORE
104-8406	1-3/8" x 6 spl
104-8420	1-3/4" x 20 spl
104-8421	1-3/8" x 21 spl



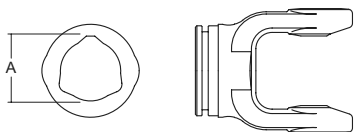
**Cross & Bearing Kit: R-Kit
(Snap Ring Located In Yoke)**

PART #	A. BORE	B. KEYWAY
200-8474	27mm (1-1/16")	74.6mm (2-15/16")



**Inner Profile Yoke with Bearing Groove
(Guard Must Rotate Freely On Yoke)**

PART #	A. BORE
300-6436	36.8mm (1-29/64")



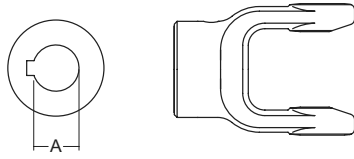
**Outer Profile Yoke with Bearing Groove
(Guard Must Rotate Freely On Yoke)**

PART #	A. BORE
700-6443	44mm (1-47/64")

PTO ASSEMBLIES & COMPONENTS

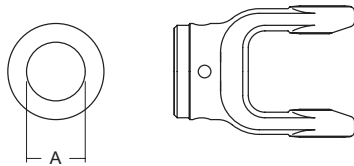
**WEASLER, NEAPCO, EUROCARDAN METRIC P.T.O. ASSEMBLIES & COMPONENTS:
INTERCHANGES WITH BONDIOLI & PAVESI**

4 SERIES



Implement Yoke: Round Bore with Keyway & Set Screw

PART #	A. BORE	B. KEYWAY
800-8430	30mm (1-3/16")	8mm (5/16")
800-8410	31.8mm (1-1/4")	6.4mm (1/4")
800-8411	34.9mm (1-3/8")	8mm (5/16")
800-8424	38.1mm (1-1/2")	9.5mm (3/8")
800-8435	35mm (1-3/8")	10mm (25/64")



Implement Yoke: Shear Pin Yoke with Pinhole

PART #	A. BORE
802-8410	31.8mm (1-1/4")
802-8430	30mm (1-3/16")
802-8435	35mm (1-3/8")



Inner Tube

PART #	LENGTH
400-6436	1.5m (59-1/16")
404-6436	1.0m (39-3/8")



Outer Tube

PART #	LENGTH
600-6343	1.5m (59-1/16")
604-6343	1.0m (39-3/8")



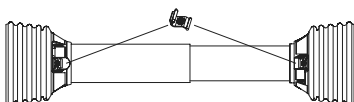
Roll Pin

PART #	A	B
508-0860	8mm (5/16")	60mm (2-23/64")



Easy Lock™ Replacement Kit

PART #	DESCRIPTION
13005000	4 per kit



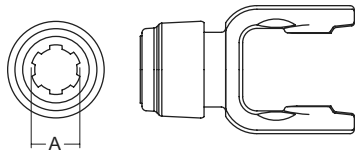
**Guard
(Order Bearings as Required)**

PART #	OVERALL DRIVE LENGTH	BEARING KIT (2 PER KIT)
900-2548	48"	961-2534
900-2560	60"	961-2534

PTO ASSEMBLIES & COMPONENTS

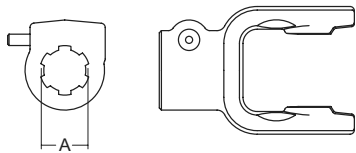
**WEASLER, NEAPCO, EUROCARDAN METRIC P.T.O. ASSEMBLIES & COMPONENTS:
INTERCHANGES WITH BONDIOLI & PAVESI**

5 SERIES



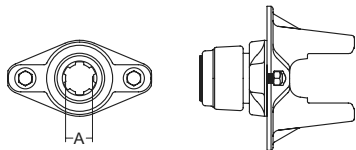
Tractor Yoke: Safety Slide Lock

PART #	A. BORE
101-6506	1-3/8" x 6 spl
101-6521	1-3/8" x 21 spl



Tractor Yoke: Quick Disconnect

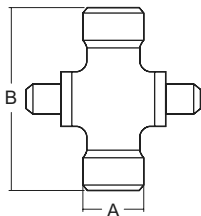
PART #	A. BORE
102-6506	1-3/8" x 6 spl
102-6520	1-3/4" x 20 spl
102-6521	1-3/8" x 21 spl



Tractor Yoke: Ball Shear

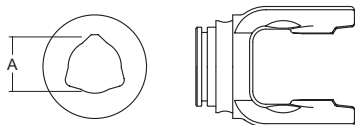
PART #	A. BORE
104-6506	1-3/8" x 6 spl
104-6520	1-3/4" x 20 spl
104-6521	1-3/8" x 21 spl

PTO ASSEMBLIES & COMPONENTS



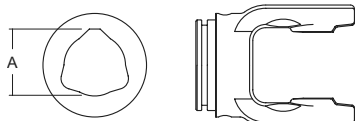
**Cross & Bearing Kit: R-Kit
(Snap Ring Located In Yoke)**

PART #	A	B
200-6580	30.2mm (1-3/16")	79.4mm (3-1/8")



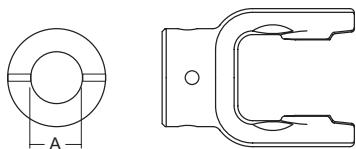
**Inner Profile Yoke with Bearing Groove
(Guard Must Rotate Freely On Yoke)**

PART #	A. BORE
300-6545	45.2mm (1-25/32")



**Outer Profile Yoke with Bearing Groove
(Guard Must Rotate Freely On Yoke)**

PART #	A. BORE
700-6552	51.7mm (2-3/64")

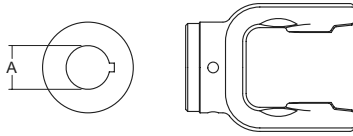


Implement Yoke: Shear Pin Yoke with Pinhole

PART #	A. BORE
802-6535	34.9mm (1-3/8")

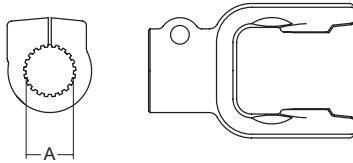
**WEASLER, NEAPCO, EUROCARDAN METRIC P.T.O. ASSEMBLIES & COMPONENTS:
INTERCHANGES WITH BONDIOLI & PAVESI**

5 SERIES



Implement Yoke: Round Bore with Keyway & Set Screw

PART #	A. BORE	B. KEYWAY
800-6510	31.8mm (1-1/4")	6.4mm (1/4")
800-6511	34.9mm (1-3/8")	8mm (5/16")
800-6524	38.1mm (1-1/2")	9.5mm (3/8")
800-6535	35mm (1-3/8")	8mm (5/16")



Implement Yoke: Clamp Yoke

PART #	A. BORE
807-6521	35mm (1-3/8" x 21 spl)

Inner Tube



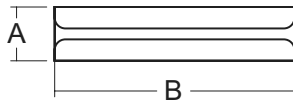
PART #	LENGTH
400-6545	1.5m (59-1/16")
404-6545	1.0m (39-3/8")

Outer Tube



PART #	LENGTH
600-6552	1.5m (59-1/16")
604-6552	1.0m (39-3/8")

PTO ASSEMBLIES & COMPONENTS



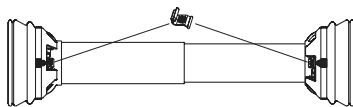
Roll Pin

PART #	A	B
508-1075	10mm (25/64")	75mm (2-61/64")



Easy Lock™ Replacement Kit

PART #	DESCRIPTION
13005000	4 per kit

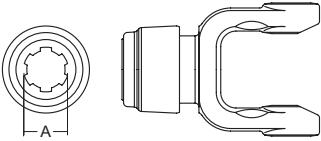


**Guard
(Order Bearings as Required)**

PART #	OVERALL DRIVE LENGTH	BEARING KIT (2 PER KIT)
902-3548	48"	961-3505
902-3560	60"	961-3505

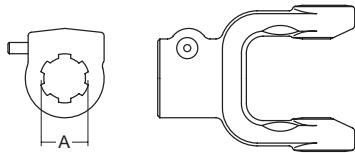
**WEASLER, NEAPCO, EUROCARDAN METRIC P.T.O. ASSEMBLIES & COMPONENTS:
INTERCHANGES WITH BONDIOLI & PAVESI**

6 SERIES



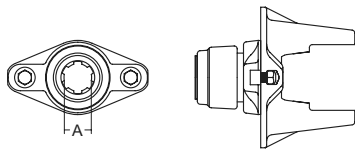
Tractor Yoke: Safety Slide Lock

PART #	A. BORE
101-8606	1-3/8" x 6 spl
101-8620	1-3/4" x 20 spl
101-8621	1-3/8" x 21 spl



Tractor Yoke: Quick Disconnect

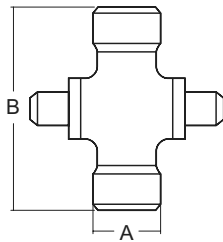
PART #	A. BORE
102-8606	1-3/8" x 6 spl
102-8618	1-1/8" Hex
102-8620	1-3/4" x 20 spl
102-8621	1-3/8" x 21 spl



Tractor Yoke: Ball Shear

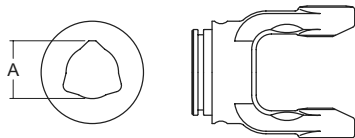
PART #	A. BORE
104-8606	1-3/8" x 6 spl
104-8620	1-3/4" x 20 spl
104-8621	1-3/8" x 21 spl

PTO ASSEMBLIES & COMPONENTS



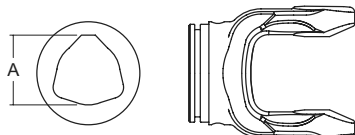
**Cross & Bearing Kit: R-Kit
(Snap Ring Located In Yoke)**

PART #	A	B
200-8692	30.2mm (1-3/16")	92mm (3-5/8")



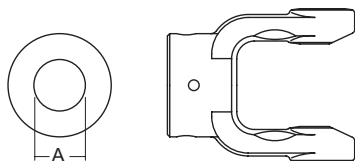
**Inner Profile Yoke with Bearing Groove
(Guard Must Rotate Freely On Yoke)**

PART #	A. BORE
300-6645	45.2mm (1-25/32")



**Outer Profile Yoke with Bearing Groove
(Guard Must Rotate Freely On Yoke)**

PART #	A. BORE
700-6654	54.2mm (2-1/8")

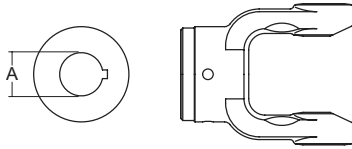


Implement Yoke: Shear Pin Yoke with Pinhole

PART #	A. BORE
802-8611	34.9mm (1-3/8")
802-8620	31.8mm (1-1/4")

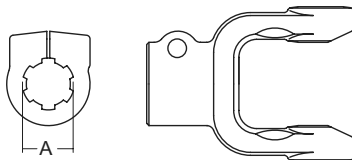
**WEASLER, NEAPCO, EUROCARDAN METRIC P.T.O. ASSEMBLIES & COMPONENTS:
INTERCHANGES WITH BONDIOLI & PAVESI**

6 SERIES



Implement Yoke: Round Bore with Keyway & Set Screw

PART #	A. BORE	B. KEYWAY
800-8610	31.8mm (1-1/4")	6.4mm (1/4")
800-8611	35mm (1-3/8")	13mm (5/16")
800-8624	38.1mm (1-1/2")	9.5mm (3/8")
800-8628	44.5mm (1-3/4")	9.5mm (3/8")
800-8640	40mm (1-37/64")	12mm(15/32")



Implement Yoke: Clamp Yoke

PART #	A. BORE
807-8606	1-3/8" x 6 spl
807-8620	1-3/4" x 20 spl
807-8621	1-3/8" x 21 spl



Inner Tube

PART #	LENGTH
400-6545	1.5m (59-1/16")
404-6545	1.0m (39-3/8")

PTO ASSEMBLIES & COMPONENTS



Outer Tube

PART #	LENGTH
600-6654	1.5m (59-1/16")
604-6654	1.0m (39-3/8")



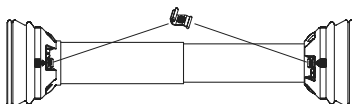
Roll Pin

PART #	A	B
508-1080	10mm (25/64")	80mm (3-5/32")



Easy Lock™ Replacement Kit

PART #	DESCRIPTION
13005000	4 per kit

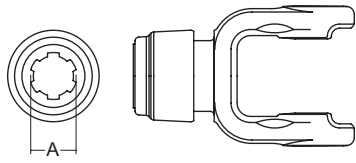


**Guard
(Order Bearings as Required)**

PART #	OVERALL DRIVE LENGTH	BEARING KIT (2 PER KIT)
902-3548	48"	961-3567
902-3560	60"	961-3567

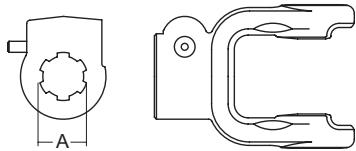
**WEASLER, NEAPCO, EUROCARDAN METRIC P.T.O. ASSEMBLIES & COMPONENTS:
INTERCHANGES WITH BONDIOLI & PAVESI**

7N SERIES



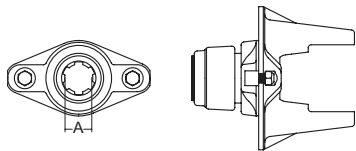
Tractor Yoke: Safety Slide Lock

PART #	A. BORE
101-6706	1-3/8" x 6 spl
101-6720	1-3/4" x 20 spl
101-6721	1-3/8" x 21 spl



Tractor Yoke: Quick Disconnect

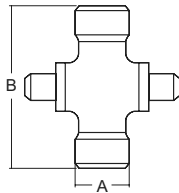
PART #	A. BORE
102-6706	1-3/8" x 6 spl
102-6720	1-3/4" x 20 spl
102-6721	1-3/8" x 21 spl
102-6728	1-3/4" x 6 spl



Tractor Yoke: Ball Shear

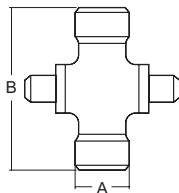
PART #	A. BORE
104-6706	1-3/8" x 6 spl
104-6721	1-3/8" x 21 spl

PTO ASSEMBLIES & COMPONENTS



**Cross & Bearing Kit: R-Kit
(Snap Ring Located In Yoke)**

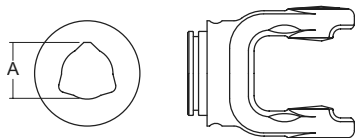
PART #	A	B
200-6794	34.9mm (1-3/8")	94mm (3-45/64")



**Cross & Bearing Kit for AB7*
(Snap Ring Located In Yoke)**

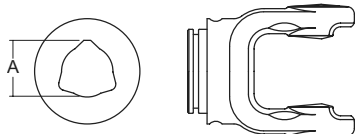
PART #	A	B
200-8706	30.2mm (1-3/16")	106.5mm (4-3/16")

***OLD BONDIOLI AND PAVESI 7 SERIES IS INTERCHANGEABLE WITH WALTERSCHEID 230 SERIES.**



**Inner Profile Yoke with Bearing Groove
(Guard Must Rotate Freely On Yoke)**

PART #	A. BORE
300-6745	45.2mm (1-25/32")

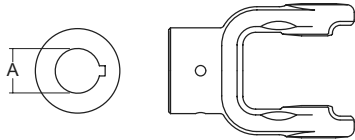


**Outer Profile Yoke with Bearing Groove
(Guard Must Rotate Freely On Yoke)**

PART #	A. BORE
700-6754	54.2mm (2-1/8")

**WEASLER, NEAPCO, EUROCARDAN METRIC P.T.O. ASSEMBLIES & COMPONENTS:
INTERCHANGES WITH BONDIOLI & PAVESI**

7N SERIES



Implement Yoke: Round Bore with Keyway & Set Screw

PART #	A. BORE	B. KEYWAY
800-6722	35mm (1-3/8")	8.0mm (5/16")
800-6728	44.5mm (1-3/4")	9.5mm (3/8")
800-6740	40mm (1-37/64")	12.7mm (1/2")



Inner Tube

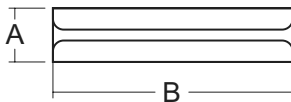
PART #	LENGTH
400-6745	1.5m (59-1/16")
404-6745	1.0m (39-3/8")



Outer Tube

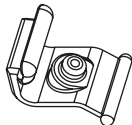
PART #	LENGTH
600-6654	1.5m (59-1/16")
604-6654	1.0m (39-3/8")

PTO ASSEMBLIES & COMPONENTS



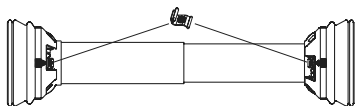
Roll Pin

PART #	A	B
508-1080	10mm (13/32")	80mm (3-5/32")



Easy Lock™ Replacement Kit

PART #	DESCRIPTION
13005000	4 per kit

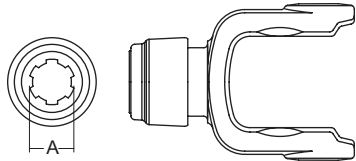


**Guard
(Order Bearings as Required)**

PART #	OVERALL DRIVE LENGTH	BEARING KIT (2 PER KIT)
902-3548	48"	961-3567
902-3560	60"	961-3567

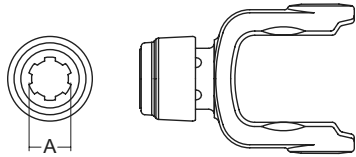
**WEASLER, NEAPCO, EUROCARDAN METRIC P.T.O. ASSEMBLIES & COMPONENTS:
INTERCHANGES WITH BONDIOLI, PAVESI, & WALTERSHEID**

8 SERIES



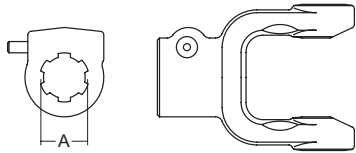
Tractor Yoke: Safety Slide Lock

PART #	A. BORE
101-6806	1-3/8" x 6 spl
101-6820	1-3/4" x 20 spl
101-6821	1-3/8" x 21 spl



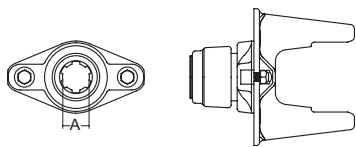
Tractor Yoke: Auto-Lok

PART #	A. BORE
110-6806	1-3/8" x 6 spl



Tractor Yoke: Quick Disconnect

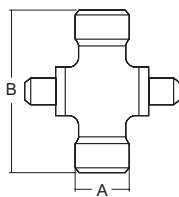
PART #	A. BORE
102-6806	1-3/8" x 6 spl
102-6820	1-3/4" x 20 spl
102-6821	1-3/8" x 21 spl
102-6828	1-3/4" x 6 spl



Tractor Yoke: Ball Shear

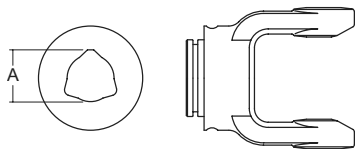
PART #	A. BORE
104-6806	1-3/8" x 6 spl
104-6820	1-3/4" x 20 spl
104-6821	1-3/8" x 21 spl

PTO ASSEMBLIES & COMPONENTS



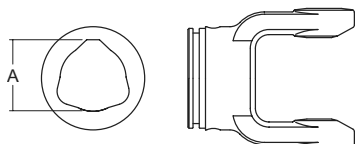
**Cross & Bearing Kit: R-Kit
(Snap Ring Located In Yoke)**

PART #	A	B
200-6806	34.9mm (1-3/8")	106.5mm (4-3/16")



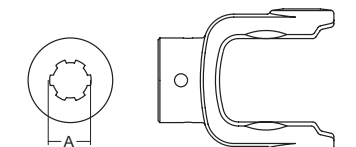
**Inner Profile Yoke with Bearing Groove
(Guard Must Rotate Freely On Yoke)**

PART #	A. BORE
300-6845 (old series 8)	45.2mm (1-25/32")
300-6854	54.2mm (2-1/8")



**Outer Profile Yoke with Bearing Groove
(Guard Must Rotate Freely On Yoke)**

PART #	A. BORE
700-6863	63mm (2-31/64")

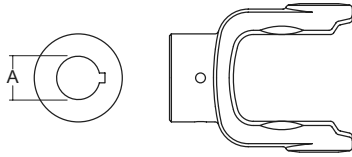


Implement Yoke: Spline Bore with Pinhole

PART #	A. BORE
801-6806	1-3/8" x 6 spl

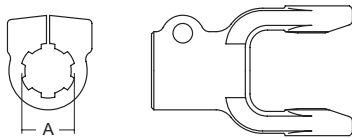
**WEASLER, NEAPCO, EUROCARDAN METRIC P.T.O. ASSEMBLIES & COMPONENTS:
INTERCHANGES WITH BONDIOLI, PAVESI, & WALTERSHEID**

8 SERIES



Implement Yoke: Round Bore with Keyway & Set Screw

PART #	A. BORE	B. KEYWAY
800-6822	35mm (1-3/8")	8mm (5/16")
800-6824	38.1mm (1-1/2")	9.5mm (3/8")
800-6828	44.5mm (1-3/4")	9.5mm (3/8")
800-6832	50.8mm (2")	12.7mm (1/2")



Implement Yoke: Clamp Yoke

PART #	A. BORE
807-6806	1-3/8" x 6 spl
807-6820	1-3/4" x 20 spl
807-6821	1-3/8" x 21 spl



Inner Tube

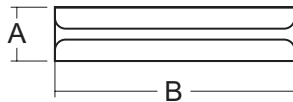
PART #	LENGTH
600-6654	1.5m (59-1/16")
604-6654	1.0m (39-3/8")



Outer Tube

PART #	LENGTH
600-6863	1.5m (59-1/16")
604-6863	1.0m (39-3/8")

PTO ASSEMBLIES & COMPONENTS



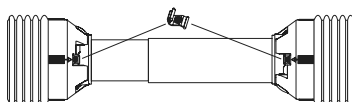
Roll Pin

PART #	A	B
508-0880	8mm (5/16")	80mm (3-5/32")
508-1280	12mm (15/32")	80mm (3-5/32")

Easy Lock™ Replacement Kit



PART #	DESCRIPTION
13005000	4 per kit

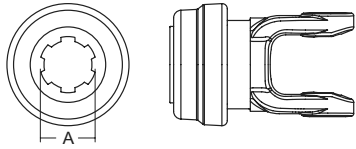


**Guard
(Order Bearings as Required)**

PART #	OVERALL DRIVE LENGTH	BEARING KIT (2 PER KIT)
900-4548	48"	961-4589
900-4560	60"	961-4589

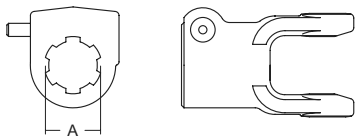
**WEASLER, NEAPCO, EUROCARDAN METRIC P.T.O. ASSEMBLIES & COMPONENTS:
INTERCHANGES WITH WALTERSHEID**

2100/100 SERIES



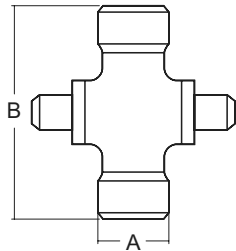
Tractor Yoke: Safety Slide Lock

PART #	A. BORE
101-7106	1-3/8" x 6 spl
101-7121	1-3/8" x 21 spl



Tractor Yoke: Quick Disconnect

PART #	A. BORE
102-7106	1-3/8" x 6 spl
102-7121	1-3/8" x 21 spl

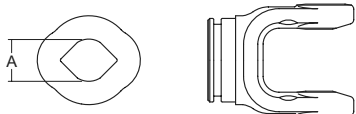


**Cross & Bearing Kit: R-Kit
(Snap Ring Located In Yoke)**

PART #	A	B
200-7155	22mm (7/8")	54.8mm (2-5/32")

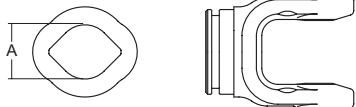
PTO ASSEMBLIES & COMPONENTS

**Inner Profile Yoke with Bearing Groove
(Guard Must Rotate Freely On Yoke)**



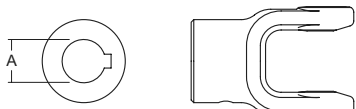
PART #	A. BORE
300-7123	23.8mm (15/16")

**Outer Profile Yoke with Bearing Groove
(Guard Must Rotate Freely On Yoke)**



PART #	A. BORE
700-7130	30mm (1-3/16")

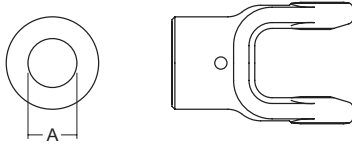
Implement Yoke: Round Bore with Keyway & Set Screw



PART #	A. BORE	B. KEYWAY
800-7125	25mm (63/64")	8mm (5/16")
800-7130	30mm (1-3/16")	8mm (5/16")

**WEASLER, NEAPCO, EUROCARDAN METRIC P.T.O. ASSEMBLIES & COMPONENTS:
INTERCHANGES WITH WALTERSHEID**

2100/100 SERIES



Implement Yoke: Shear Pin Yoke with Pinhole

PART #	A. BORE
802-7108	25.4mm (1")
802-7110	31.8mm (1-1/4")
802-7125	25mm (63/64")
802-7130	30mm (1-3/16")



Inner Tube: Solid

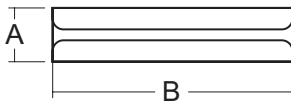
PART #	LENGTH
400-7123	1.5m (59-1/16")
404-7123	1m (39-3/8")



Outer Tube

PART #	LENGTH
600-7130	1.5m (59-1/16")
604-7130	1m (39-3/8")

PTO ASSEMBLIES & COMPONENTS



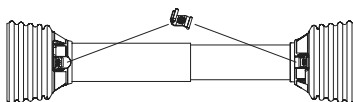
Roll Pin

PART #	A	B
508-0850	8mm (5/16")	50mm (1-31/32")



Easy Lock™ Replacement Kit

PART #	DESCRIPTION
13005000	4 per kit

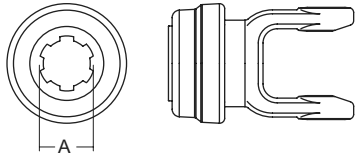


**Guard
(Order Bearings as Required)**

PART #	OVERALL DRIVE LENGTH	BEARING KIT (2 PER KIT)
900-2548	48"	961-5005
900-2560	60"	961-5005

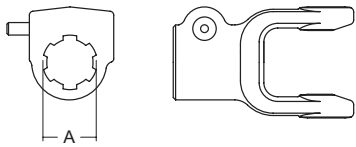
**WEASLER, NEAPCO, EUROCARDAN METRIC P.T.O. ASSEMBLIES & COMPONENTS:
INTERCHANGES WITH WALTERSHEID**

2200/200 SERIES



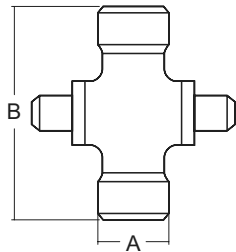
Tractor Yoke: Safety Slide Lock

PART #	A. BORE
101-8206	1-3/8" x 6 spl
101-8221	1-3/8" x 21 spl



Tractor Yoke: Quick Disconnect

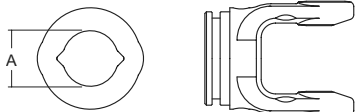
PART #	A. BORE
102-8206	1-3/8" x 6 spl
102-8218	1-1/8" x 6 spl
102-8221	1-3/8" x 21 spl



**Cross & Bearing Kit: R-Kit
(Snap Ring Located In Yoke)**

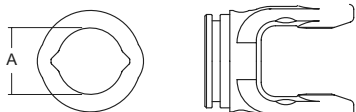
PART #	A	B
200-8261	23.8mm (15/16")	61.2mm (2-13/32")

PTO ASSEMBLIES & COMPONENTS



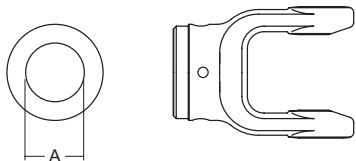
**Inner Profile Yoke with Bearing Groove
(Guard Must Rotate Freely On Yoke)**

PART #	A. BORE
300-7234	34.5mm (1-23/64")



**Outer Profile Yoke with Bearing Groove
(Guard Must Rotate Freely On Yoke)**

PART #	A. BORE
700-7241	41.3mm (1-5/8")

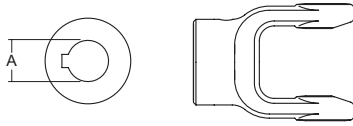


Implement Yoke: Shear Pin Yoke with Pinhole

PART #	A. BORE
802-8220 (with 1/4" pinhole)	31.8mm (1-1/4")
802-8222 (with 1/2" pinhole)	35mm (1-3/8")
802-8225 (with 5/16" pinhole)	25mm (63/64")
802-8230 (with 25/64" pinhole)	30mm (1-3/16")

**WEASLER, NEAPCO, EUROCARDAN METRIC P.T.O. ASSEMBLIES & COMPONENTS:
INTERCHANGES WITH WALTERSHEID**

2200/200 SERIES



Implement Yoke: Round Bore with Keyway & Set Screw

PART #	A. BORE	B. KEYWAY
800-8225	25mm (63/64")	8mm (5/16")
800-8208	25.4mm (1")	6.4mm (1/4")
800-8230	30mm (1-3/16")	8mm (5/16")
800-8210	31.8mm (1-1/4")	6.4mm (1/4")
800-8211	34.9mm (1-3/8")	8mm (5/16")
800-8218	28.6mm (1-1/8")	6.4mm (1/4")
800-8220	31.8mm (1-1/4")	8mm (5/16")



Inner Tube

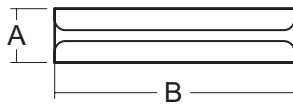
PART #	LENGTH
400-7234	1.5m (59-1/16")
404-7234	1m (39-3/8")



Outer Tube

PART #	LENGTH
600-7241	1.5m (59-1/16")
604-7241	1m (39-3/8")

PTO ASSEMBLIES & COMPONENTS



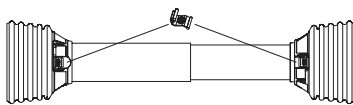
Roll Pin

PART #	A	B
508-1060	10mm (25/64")	60mm (2-23/64")



Easy Lock™ Replacement Kit

PART #	DESCRIPTION
13005000	4 per kit

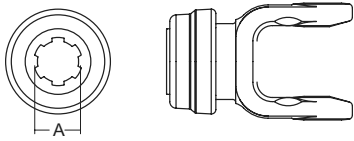


**Guard
(Order Bearings as Required)**

PART #	OVERALL DRIVE LENGTH	BEARING KIT (2 PER KIT)
900-2548	48"	961-0251
900-2560	60"	961-0251

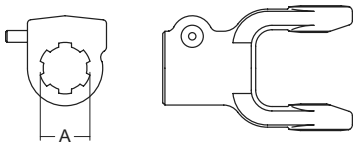
**WEASLER, NEAPCO, EUROCARDAN METRIC P.T.O. ASSEMBLIES & COMPONENTS:
INTERCHANGES WITH WALTERSHEID**

2300/210 SERIES



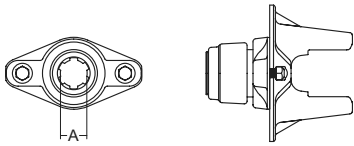
Tractor Yoke: Safety Slide Lock

PART #	A. BORE
101-8406	1-3/8" x 6 spl
101-8421	1-3/8" x 21 spl



Tractor Yoke: Quick Disconnect

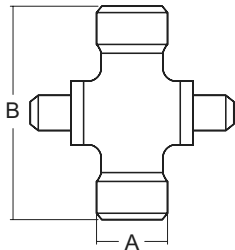
PART #	A. BORE
102-8406	1-3/8" x 6 spl
102-8418	1-1/8" hex
102-8421	1-3/8" x 21 spl



Tractor Yoke: Ball Shear

PART #	A. BORE
104-8406	1-3/8" x 6 spl
104-8420	1-3/4" x 20 spl
104-8421	1-3/8" x 21 spl

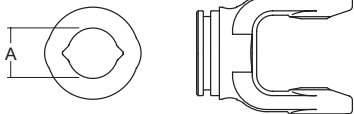
PTO ASSEMBLIES & COMPONENTS



**Cross & Bearing Kit: R-Kit
(Snap Ring Located In Yoke)**

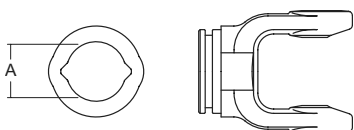
PART #	A	B
200-8474	27mm (1-1/16")	74.6mm (2-15/16")

**Inner Profile Yoke with Bearing Groove
(Guard Must Rotate Freely On Yoke)**



PART #	A. BORE
300-7434	34.5mm (1-11/32")
300-7439	39.5mm (1-9/16")

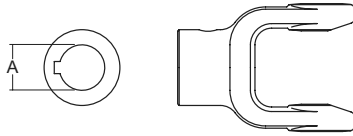
**Outer Profile Yoke with Bearing Groove
(Guard Must Rotate Freely On Yoke)**



PART #	A. BORE
700-7441	41.3mm (1-5/8")

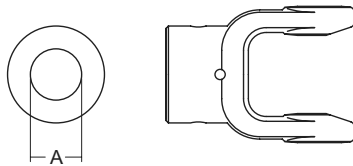
**WEASLER, NEAPCO, EUROCARDAN METRIC P.T.O. ASSEMBLIES & COMPONENTS:
INTERCHANGES WITH WALTERSHEID**

2300/210 SERIES



Implement Yoke: Round Bore with Keyway & Set Screw

PART #	A. BORE	B. KEYWAY
800-8430	30mm (1-3/16")	8mm (5/16")
800-8410	31.8mm (1-1/4")	6.4mm (1/4")
800-8411	34.9mm (1-3/8")	8mm (5/16")
800-8424	38.1mm (1-1/2")	9.5mm (3/8")
800-8435	35mm (1-3/8")	10mm (25/64")



Implement Yoke: Shear Pin Yoke with Pinhole

PART #	A. BORE
802-8420	31.8mm (1-1/4")
802-8430	30mm (1-3/16")
802-8435	35mm (1-3/16")



Inner Tube

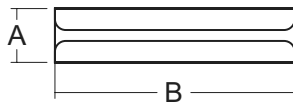
PART #	LENGTH
400-7234	1.5m (59-1/16")
404-7234	1m (39-3/8")

PTO ASSEMBLIES & COMPONENTS



Outer Tube

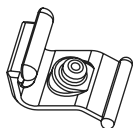
PART #	LENGTH
600-7241	1.5m (59-1/16")
604-7241	1m (39-3/8")



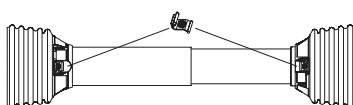
Roll Pin

PART #	A	B
508-1065	10mm (24/64")	65mm (2-9/16")

Easy Lock™ Replacement Kit



PART #	DESCRIPTION
13005000	4 per kit

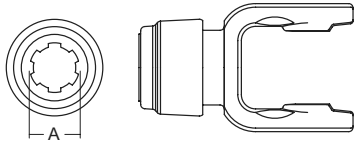


**Guard
(Order Bearings as Required)**

PART #	OVERALL DRIVE LENGTH	BEARING KIT (2 PER KIT)
900-2548	48"	961-0251
900-2560	60"	961-0251

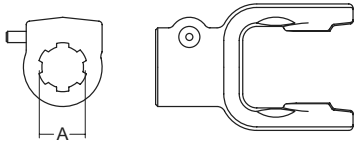
**WEASLER, NEAPCO, EUROCARDAN METRIC P.T.O. ASSEMBLIES & COMPONENTS:
INTERCHANGES WITH WALTERSHEID**

2400 SERIES



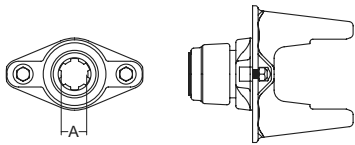
Tractor Yoke: Safety Slide Lock

PART #	A. BORE
101-7606	1-3/8" x 6 spl
101-7620	1-3/4" x 20 spl
101-7621	1-3/8" x 21 spl



Tractor Yoke: Quick Disconnect

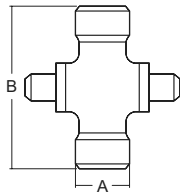
PART #	A. BORE
102-7606	1-3/8" x 6 spl
102-7620	1-3/4" x 20 spl
102-7621	1-3/8" x 21 spl



Tractor Yoke: Ball Shear

PART #	A. BORE
104-7606	1-3/8" x 6 spl
104-7620	1-3/4" x 20 spl
104-7621	1-3/8" x 21 spl

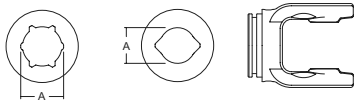
PTO ASSEMBLIES & COMPONENTS



**Cross & Bearing Kit: R-Kit
(Snap Ring Located In Yoke)**

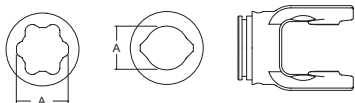
PART #	A	B
200-7676	32mm (1-1/4")	76mm (3")

**Inner Profile Yoke with Bearing Groove
(Guard Must Rotate Freely On Yoke)**

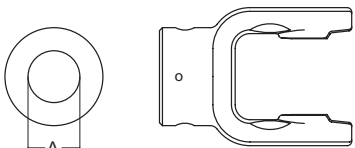


PART #	A. BORE
300-7639 (lemon)	39.5mm (1-9/16")
300-7651 (star)	51.4mm (2-1/64")

**Outer Profile Yoke with Bearing Groove
(Guard Must Rotate Freely On Yoke)**



PART #	A. BORE
700-7648 (lemon)	48mm (1-7/8")
700-7661 (star)	61mm (2-13/32")

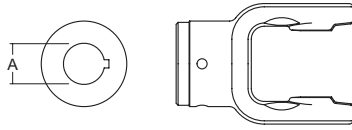


Implement Yoke: Shear Pin Yoke with Pinhole

PART #	A. BORE
802-7611	35mm (1-3/8")
802-7630	30mm (1-3/16")
802-7640	40mm (1-37/64")

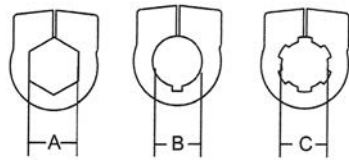
**WEASLER, NEAPCO, EUROCARDAN METRIC P.T.O. ASSEMBLIES & COMPONENTS:
INTERCHANGES WITH WALTERSHEID**

2400 SERIES



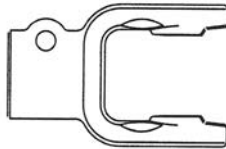
Implement Yoke: Round Bore with Keyway & Set Screw

PART #	A. BORE	B. KEYWAY
800-7610	31.8mm (1-1/4")	6.4mm (1/4")
800-7611	34.9mm (1-3/8")	8mm (5/16")
800-7635	35mm (1-3/8")	10mm (25/64")
800-7640	40mm (1-37/64")	12mm (15/32")

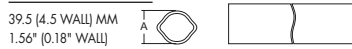


Implement Yoke: Clamp Yoke

PART #	A. BORE	B. BORE	C. BORE
807-7606			1-3/8" x 6 spl
807-7618	1-1/8" hex (1.12)		
807-7620			1-3/4" x 20 spl
807-7621			1-3/8" x 21 spl
807-7622		1-3/8" rd (1.38)	



Inner Tube



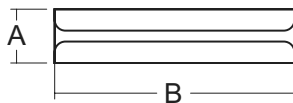
PART #	LENGTH
400-7539 (lemon)	1.5m (59-1/16")
400-7651 (star)	1.5m (59-1/16")
404-7539 (lemon)	1.0m (39-3/8")
404-7651 (star)	1.0m (39-3/8")

PTO ASSEMBLIES & COMPONENTS



PART #	LENGTH
600-7548 (lemon)	1.5m (59-1/16")
600-7961 (star)	1.5m (59-1/16")
604-7548 (lemon)	1.0m (39-3/8")
604-7961 (star)	1.0m (39-3/8")

Outer Tube



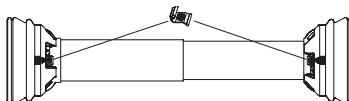
Roll Pin

PART #	A	B
508-1075	10mm (25/64")	75mm (2-61/64")



Easy Lock™ Replacement Kit

PART #	DESCRIPTION
13005000	4 per kit

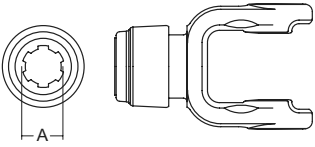


Guard(Order Bearings as Required)

PART #	OVERALL DRIVE LENGTH	BEARING KIT (2 PER KIT)
902-3548	48"	961-3525
902-3560	60"	961-3525

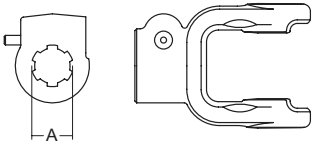
**WEASLER, NEAPCO, EUROCARDAN METRIC P.T.O. ASSEMBLIES & COMPONENTS:
INTERCHANGES WITH WALTERSHEID**

2500 SERIES



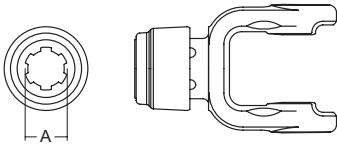
Tractor Yoke: Safety Slide Lock

PART #	A. BORE
101-7906	1-3/8" x 6 spl
101-7920	1-3/4" x 20 spl
101-7921	1-3/8" x 21 spl



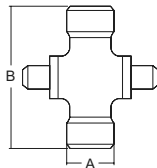
Tractor Yoke: Quick Disconnect

PART #	A. BORE
102-7906	1-3/8" x 6 spl
102-7920	1-3/4" x 20 spl
102-7921	1-3/8" x 21 spl



Auto-Lok

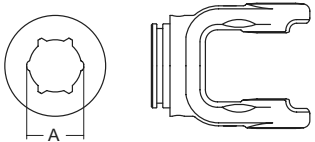
PART #	A. BORE
110-7906	1-3/8" x 6 spl



**Cross & Bearing Kit: R-Kit
(Snap Ring Located In Yoke)**

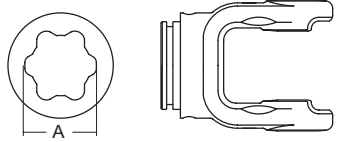
PART #	A	B
200-7989	36mm (1-27/64")	88.8mm (3-1/2")

PTO ASSEMBLIES & COMPONENTS



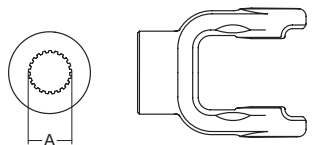
**Inner Profile Yoke with Bearing Groove
(Guard Must Rotate Freely On Yoke)**

PART #	A. BORE
300-7951	51.4mm (2-1/64")



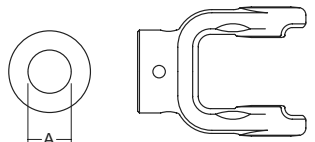
**Outer Profile Yoke with Bearing Groove
(Guard Must Rotate Freely On Yoke)**

PART #	A. BORE
700-7961	61.0mm (2-13/32")



Implement Yoke: Spline Bore

PART #	A. BORE
801-7921	1-3/8" x 21 spl

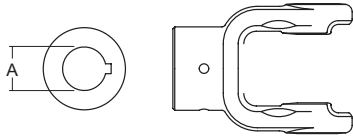


Implement Yoke: Shear Pin Yoke with Pinhole

PART #	A. BORE
802-7922	35mm (1-3/8")
802-7924	38.1mm (1-1/2")

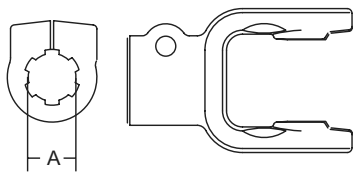
**WEASLER, NEAPCO, EUROCARDAN METRIC P.T.O. ASSEMBLIES & COMPONENTS:
INTERCHANGES WITH WALTERSHEID**

2500 SERIES



Implement Yoke: Round Bore with Keyway & Set Screw

PART #	A. BORE	B. KEYWAY
800-7922	35mm (1-3/8")	8mm (5/16")
800-7924	38.1mm (1-1/2")	9.5mm (3/8")
800-7928	44.4mm (1-3/4")	10mm (3/8")
800-7935	35mm (1-3/8")	10mm (25/64")



Implement Yoke: Clamp Yoke

PART #	A. BORE
807-7906	1-3/8" x 6 spl
807-7918	1-3/4" x 6 spl
807-7920	1-3/4" x 20 spl
807-7921	1-3/8" x 21 spl



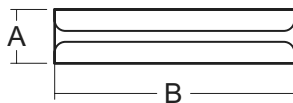
Inner Tube

PART #	LENGTH
400-7651	1.5m (59-1/16")
404-7651	1m (39-3/8")



Outer Tube

PART #	LENGTH
600-7961	1.5m (59-1/16")
604-7961	1m (39-3/8")



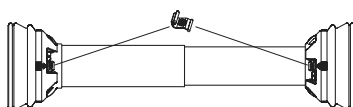
Roll Pin

PART #	A	B
508-1090	10mm (25/64")	90mm (3-35/64")



Easy Lock™ Replacement Kit

PART #	DESCRIPTION
13005000	4 per kit



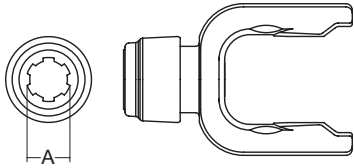
**Guard
(Order Bearings as Required)**

PART #	OVERALL DRIVE LENGTH	BEARING KIT (2 PER KIT)
902-3548	48"	961-3525
902-3560	60"	961-3525

PTO ASSEMBLIES & COMPONENTS

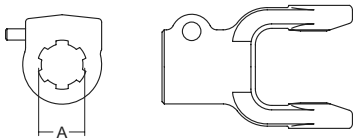
**WEASLER, NEAPCO, EUROCARDAN METRIC P.T.O. ASSEMBLIES & COMPONENTS:
INTERCHANGES WITH WALTERSHEID**

2600 SERIES



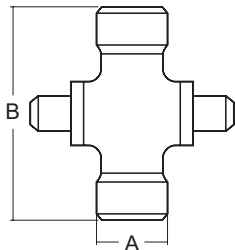
Tractor Yoke: Safety Slide Lock

PART #	A. BORE
101-7006	1-3/8" x 6 spl
101-7020	1-3/4" x 20 spl
101-7021	1-3/8" x 21 spl



Tractor Yoke: Quick Disconnect

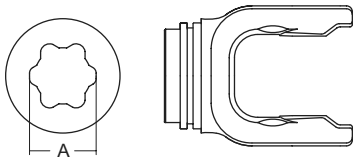
PART #	A. BORE
102-7006	1-3/8" x 6 spl
102-7020	1-3/4" x 20 spl
102-7021	1-3/8" x 21 spl



**Cross & Bearing Kit: R-Kit
(Snap Ring Located In Yoke)**

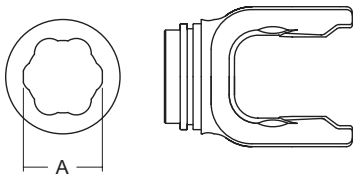
PART #	A	B
200-7004	42mm (1-21/32")	104mm (4-3/32")

PTO ASSEMBLIES & COMPONENTS



**Inner Profile Yoke with Bearing Groove
(Guard Must Rotate Freely On Yoke)**

PART #	A. BORE
300-7061	61mm (2-13/32")

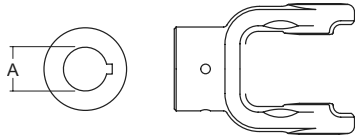


**Outer Profile Yoke with Bearing Groove
(Guard Must Rotate Freely On Yoke)**

PART #	A. BORE
700-7071	71.7mm (2-53/64")

**WEASLER, NEAPCO, EUROCARDAN METRIC P.T.O. ASSEMBLIES & COMPONENTS:
INTERCHANGES WITH WALTERSHEID**

2600 SERIES



Implement Yoke: Round Bore with Keyway & Set Screw

PART #	A. BORE	B. KEYWAY
800-7024	38.1mm (1-1/2")	3/8"
800-7026	41.3mm (1-5/8")	3/8"
800-7028	44.5mm (1-3/4")	3/8"
800-7032	50.8mm (2")	1/2"



Outer Tube

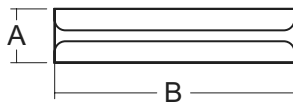
PART #	LENGTH
600-7071	1.5m (59-1/16")
604-7071	1m (39-3/8")



Inner Tube

PART #	LENGTH
600-7961	1.5m (59-1/16")
604-7961	1m (39-3/8")

PTO ASSEMBLIES & COMPONENTS



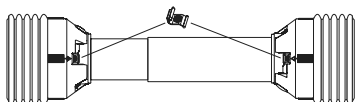
Roll Pin

PART #	A	B
508-1310	13mm (1/2")	100mm (3-15/16")



Easy Lock™ Replacement Kit

PART #	DESCRIPTION
13005000	4 per kit

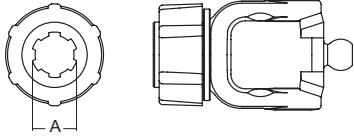


**Guard
(Order Bearings as Required)**

PART #	OVERALL DRIVE LENGTH	BEARING KIT (2 PER KIT)
900-4548	48"	961-4535
900-4560	60"	961-4535

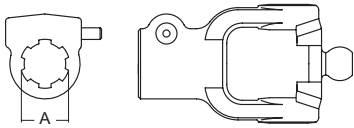
**WEASLER, NEAPCO, EUROCARDAN METRIC P.T.O. ASSEMBLIES & COMPONENTS:
INTERCHANGES WITH WALTERSHEID**

2380 SERIES CV



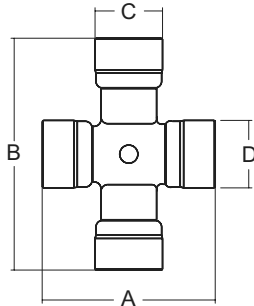
Tractor Yoke: Safety Slide Lock, Ring Groove

PART #	A. BORE
107-8406	1-3/8" x 6 spl
107-8421	1-3/8" x 21 spl



Tractor Yoke: Quick Disconnect

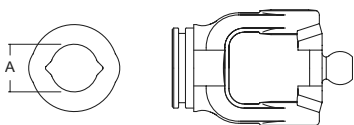
PART #	A. BORE
109-8406	1-3/8" x 6 spl



**Cross & Bearing Kit: R-Kit
(Snap Ring Located In Yoke)**

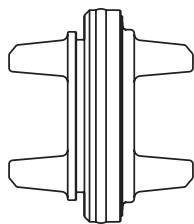
PART #	A	B	C	D
200-7491	74.6mm (2-15/16")	91mm (3-37/64")	23.8mm (15/16")	27mm (1-1/16")

PTO ASSEMBLIES & COMPONENTS



**Inner Profile Yoke with Bearing Groove
(Guard Must Rotate Freely On Yoke)**

PART #	A. BORE
301-7434	34.5mm (1-23/64")
301-7439	39.5mm (1-9/16")

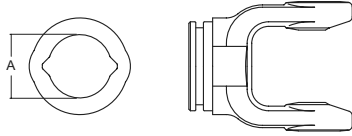


Center Housing

PART #
550-7400

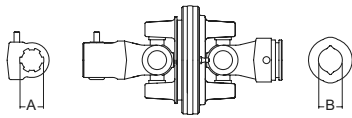
**WEASLER, NEAPCO, EUROCARDAN METRIC P.T.O. ASSEMBLIES & COMPONENTS:
INTERCHANGES WITH WALTERSHEID**

2380 SERIES



**Outer Profile Yoke with Bearing Groove
(Guard Must Rotate Freely On Yoke)**

PART #	A. BORE
700-7441	41mm (1.614")



80 C.V. Joint

PART #	A. BORE	B. BORE
15507406	1-3/8" x 6 spl	34.5mm (1.358")



Outer Tube

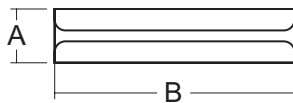
PART #	LENGTH
606-7241	1000mm (39-3/8")



Inner Tube: Rislun Coating

PART #	LENGTH
406-7234	1000mm (39-3/8")

PTO ASSEMBLIES & COMPONENTS

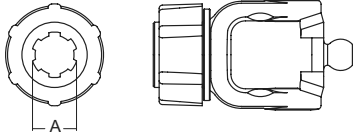


Roll Pin

PART #	A	B
508-1065	10mm (25/64")	65mm (2-9/16")

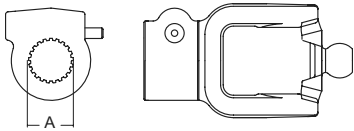
**WEASLER, NEAPCO, EUROCARDAN METRIC P.T.O. ASSEMBLIES & COMPONENTS:
INTERCHANGES WITH WALTERSHEID**

2480 SERIES



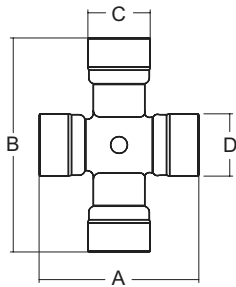
Tractor Yoke: Safety Slide Lock, Ring Groove

PART #	A. BORE
107-7606	1-3/8" x 6 spl
107-7620	1-3/4" x 20 spl
107-7621	1-3/8" x 21 spl



Tractor Yoke: Quick Disconnect

PART #	A. BORE
109-7606	1-3/8" x 6 spl
109-7620	1-3/4" x 20 spl
109-7621	1-3/8" x 21 spl

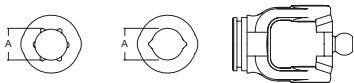


**Cross & Bearing Kit: R-Kit
(Snap Ring Located In Yoke)**

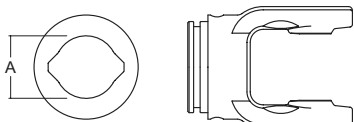
PART #	A	B	C	D
200-7694	76mm (2-63/64")	94mm (3-45/64")	27mm (1-1/16")	32mm (1-7/64")

PTO ASSEMBLIES & COMPONENTS

**Inner Profile Yoke with Bearing Groove
(Guard Must Rotate Freely On Yoke)**



PART #	A. BORE
301-7639	40mm (1-9/16")
301-7651	51mm (2-1/64")



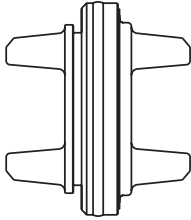
**Outer Profile Yoke with Bearing Groove
(Guard Must Rotate Freely On Yoke)**

PART #	A. BORE
700-7648	48mm (1-7/8")

**WEASLER, NEAPCO, EUROCARDAN METRIC P.T.O. ASSEMBLIES & COMPONENTS:
INTERCHANGES WITH WALTERSHEID**

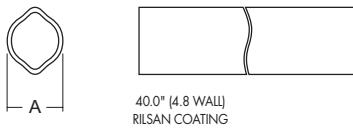
2480 SERIES

Center Housing



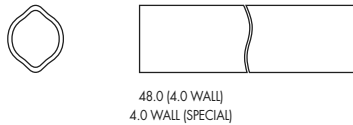
PART #
550-7600

Inner Tube: Rilsan Coating



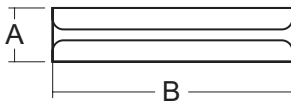
PART #	A	LENGTH
402-7639	40mm (1-9/16")	1000mm (39-3/8")

Outer Tube: Rilsan Coating



PART #	LENGTH
606-7648	1000mm (39-3/8")

Roll Pin



PART #	A	B
508-1080	10mm (13/32")	80mm (3-5/32")

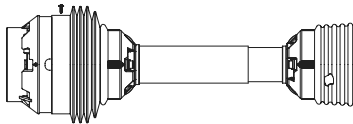
PTO ASSEMBLIES &
COMPONENTS

Easy Lock™ Replacement Kit



PART #	DESCRIPTION
13005000	4 per kit

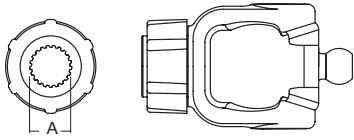
**Guard
(Order Bearings as Required)**



PART #	OVERALL DRIVE LENGTH	BEARING KIT (2 PER KIT)
912-7648	48"	961-0035
912-7660	60"	961-0035

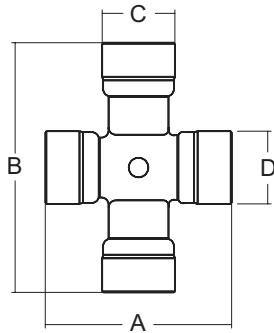
**WEASLER, NEAPCO, EUROCARDAN METRIC P.T.O. ASSEMBLIES & COMPONENTS:
INTERCHANGES WITH WALTERSHEID**

2580 SERIES



Tractor Yoke: Safety Slide Lock, Ring Grove

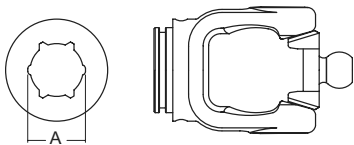
PART #	A. BORE
107-7906	1-3/8" x 6 spl
107-7920	1-3/4" x 20 spl
107-7921	1-3/8" x 21 spl



**Cross & Bearing Kit: R-Kit
(Snap Ring Located In Yoke)**

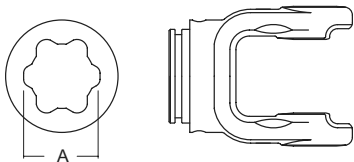
PART #	A	B	C	D
200-7906	88.8mm (3.49")	106.0mm (4.17")	1.26"	1.42"

PTO ASSEMBLIES &
COMPONENTS



**Inner Profile Yoke with Bearing Groove
(Guard Must Rotate Freely On Yoke)**

PART #	A. BORE
302-7951	51mm (2")

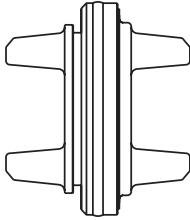


**Outer Profile Yoke with Bearing Groove
(Guard Must Rotate Freely On Yoke)**

PART #	A. BORE
700-7961	61mm (2-3/8")

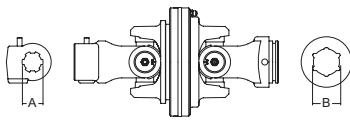
**WEASLER, NEAPCO, EUROCARDAN METRIC P.T.O. ASSEMBLIES & COMPONENTS:
INTERCHANGES WITH WALTERSHEID**

2580 SERIES



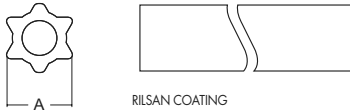
Center Housing

PART #
550-7900



80 C.V. Joint (Special Order Only)

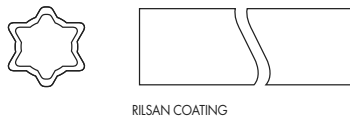
PART #	A. BORE	B. BORE
15507951	1-3/8" x 6 spl	51mm (2")
15607951	1-3/8" x 21 spl	51mm (2")
15707951	1-3/4" x 20 spl	51mm (2")



Inner Tube: Rilsan Coating

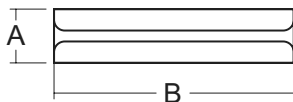
PART #	A	LENGTH
406-7951	51mm (2.01")	1000mm (39-3/8")

**PTO ASSEMBLIES &
COMPONENTS**



Outer Tube: Rilsan Coating

PART #	LENGTH
600-7961	1500mm (59-1/16")
604-7961	1000mm (39-3/8")



Roll Pin

PART #	A	B
508-1090	10mm (13/32")	90mm (3-5/32")

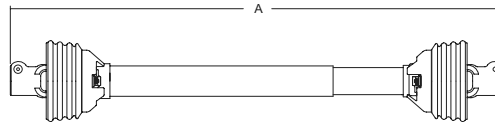


Easy Lock™ Replacement Kit

PART #	DESCRIPTION
13005000	4 per kit

METRIC DRIVELINES

Finishing Mowers



AGRI #	SERIES	A. LENGTH	TRACTOR YOKE	IMPLEMENT YOKE
14006340	3	40"	1-3/8" x 6 spl QD	1-3/8" x 6 spl QD
14006446	4	46"	1-3/8" x 6 spl QD	1-3/8" x 6 spl QD
14006637	6	37"	1-3/8" x 6 spl QD	1-3/8" x 6 spl QD

Catfish Pond Aerator Drivelines

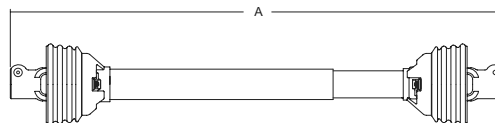
AGRI #	SERIES	A. LENGTH	TRACTOR YOKE	IMPLEMENT YOKE
14006424	4	48"	1-3/8" x 6 spl QD	1-1/2"
14006524	5	48"	1-3/8" x 6 spl QD	1-1/2"
14006624	6	48"	1-3/8" x 6 spl QD	1-1/2"
14016524	5	48"	1-3/8" x 21 spl QD	1-1/2"
14016624	6	48"	1-3/8" x 21 spl QD	1-1/2"

Rotary Cutter

PTO ASSEMBLIES & COMPONENTS

AGRI #	SERIES	TYPE	A. LENGTH	TRACTOR YOKE	IMPLEMENT YOKE
14006432	4	4ft. lift	32"	1-3/8" x 6 spl QD	1-3/8" rd w/ pinhole
14006436	4	5ft. lift	36"	1-3/8" x 6 spl QD	1-3/8" rd w/ pinhole
14006442	4	6ft. lift	42"	1-3/8" x 6 spl QD	1-3/8" rd w/ pinhole
14006542	5	6ft. lift	42"	1-3/8" x 6 spl QD	1-3/8" rd w/ pinhole
14006546	5	6ft. lift HD	46"	1-3/8" x 6 spl QD	1-3/8" rd w/ pinhole
14006551	5	6ft. lift	51"	1-3/8" x 6 spl QD	1-3/8" rd w/ pinhole
14006652	6	7ft. lift	52"	1-3/8" x 6 spl QD	1-3/8" rd w/ pinhole

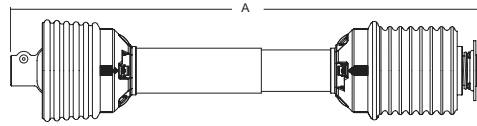
Rotary Cutter with Clutch



AGRI #	SERIES	TYPE	A. LENGTH	TRACTOR YOKE	IMPLEMENT YOKE
14106438	4	pull	38"	1-3/8" x 6 spl QD	1-3/8" x 6 spl w/friction clutch
14106546	5	pull	46"	1-3/8" x 6 spl QD	1-3/8" x 6 spl w/friction clutch
14106654	6	7' lift	54"	1-3/8" x 6 spl QD	1-3/8" x 6 spl w/friction clutch
14106660	6	7' lift	60"	1-3/8" x 6 spl QD	1-3/4" x 20 spl w/friction clutch

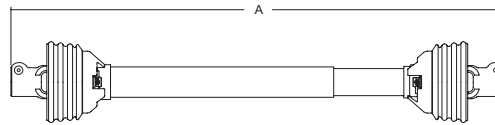
METRIC DRIVELINES

Disc Mowers



AGRI #	SERIES	A. LENGTH	TRACTOR YOKE	IMPLEMENT YOKE
14306538	5	38"	1-3/8" x 6 spl QD	1-3/8" x 6 spl QD
14306639	6	39"	1-3/8" x 6 spl	1-3/8" x 6 spl QD w/overrunning clutch

All Purpose Metric Drivelines



AGRI #	SERIES	A. LENGTH	TRACTOR YOKE	IMPLEMENT YOKE
14006247	2	47"	1-3/8" x 6 spl QD	1-3/8" x 6 spl QD
14006448	4	48"	1-3/8" x 6 spl QD	1-3/8" x 6 spl QD
14006555	5	55"	1-3/8" x 6 spl QD	1-3/8" x 6 spl QD
14006657	6	57"	1-3/8" x 6 spl QD	1-3/8" x 6 spl QD
14006857	8	57"	1-3/8" x 6 spl QD	1-3/8" x 6 spl QD
14046360	3	60"	1-3/8" x 6 spl QD	**
14046460	4	60"	1-3/8" x 6 spl QD	**
14046560	5	60"	1-3/8" x 6 spl QD	**
14046660	6	60"	1-3/8" x 6 spl QD	**
14046760	7	60"	1-3/8" x 6 spl QD	**
14006860	8	60"	1-3/8" x 6 spl QD	**

PTO ASSEMBLIES & COMPONENTS

**** THESE DRIVELINES ARE FURNISHED WITHOUT CROSS AND BEARING KIT AND IMPLEMENT. SELECT KIT AND YOKE AS REQUIRED.**

Peanut Drivelines for Amadas and KMC

AGRI #	DESCRIPTION	TRACTOR YOKE	IMPLEMENT YOKE
14626855	KMC complete shaft	1-3/8" x 21 spl	1-3/8" x 21 spl clamp
93-14616855	KMC shaft half	1-3/8" x 21 spl	
92-14626855	KMC tube shaft		1-3/8" x 21 spl clamp
14726855	KMC complete shaft	1-3/4" x 20 spl	1-3/8" x 21 spl clamp
93-14706855	KMC shaft half	1-3/4" x 20 spl	
92-14626855	KMC tube shaft		1-3/8" x 21 spl clamp
14636855	Amadas complete shaft	1-3/8" x 21 spl	1-3/8" x 21 spl w/pinhole
93-14606855	Amadas shaft half	1-3/8" x 21 spl	
92-14636855	Amadas tube shaft		1-3/8" x 21 spl w/pinhole

MOWER & COMBINE HEADER DRIVELINES

Constant Velocity Drivelines: Flex Wing Mowers



Interchanges with Bush Hog® Models 2615 & 3615			
OLD PART #	NEW PART #	SIZE	DESCRIPTION
14507955	14506855	1-3/8" x 6 spl – 1-3/8" x 6 spl	Complete driveline 55" OAL
93-14517955	93-14516855	1-3/8" x 6 spl	Tractor yoke CV HALF
92-14507955	92-14506855	1-3/8" x 6 spl	Implement clamp yoke HALF
14607955	14606855	1-3/8" x 21 spl – 1-3/8" x 6 spl	Complete driveline 55" OAL
93-14617955	93-14616855	1-3/8" x 21 spl	Tractor yoke CV HALF
92-14507955	92-14506855	1-3/8" x 6 spl	Implement clamp yoke HALF
14707955	14706855	1-3/4" x 20 spl – 1-3/8" x 6 spl	Complete driveline 55" OAL
93-14717955	93-14716855	1-3/4" x 20 spl	Tractor yoke CV HALF
92-14507955	92-14506855	1-3/8" x 6 spl	Implement clamp yoke HALF

PTO ASSEMBLIES & COMPONENTS

Interchanges with Rhino® Models SR-15 & SE-15			
OLD PART #	NEW PART #	SIZE	DESCRIPTION
14507951	14506851	1-3/8" x 6 spl – 1-3/4" x 20 spl	Complete driveline 51" OAL
93-14517951	93-14516851	1-3/8" x 6 spl	Tractor yoke CV HALF
92-14507951	92-14506851	1-3/4" x 20 spl	Implement clamp yoke HALF
14607951	14606851	1-3/8" x 21 spl – 1-3/4" x 20 spl	Complete driveline 51" OAL
93-14607951	93-14606851	1-3/8" x 21 spl	Tractor yoke CV HALF
92-14507951	92-14506851	1-3/4" x 20 spl	Implement clamp yoke HALF
14707951	14706851	1-3/4" x 20 spl – 1-3/4" x 20 spl	Complete driveline 51" OAL
93-14707951	93-14706851	1-3/4" x 20 spl	Tractor yoke CV HALF
92-14507951	92-14506851	1-3/4" x 20 spl	Implement clamp yoke HALF

NOTE: NEW PART NUMBERS HAVE EQUAL LENGTH CROSS & BEARING.

MOWER & COMBINE HEADER DRIVELINES

Constant Velocity Drivelines: Flex Wing Mowers



Interchanges with John Deere® Models 1517, 1518, & 2018

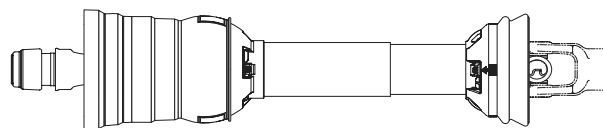
OLD PART #	NEW PART #	SIZE	DESCRIPTION
14517955	14516855	1-3/8" x 6 spl – 1-3/4" x 20 spl	Complete driveline 55" OAL
93-14517955	93-14516855	1-3/8" x 6 spl	Tractor yoke CV HALF
92-14517955	92-14516855	1-3/4" x 20 spl	Implement clamp yoke HALF
14617955	14616855	1-3/8" x 21 spl – 1-3/4" x 20 spl	Complete driveline 55" OAL
93-14617955	93-14616855	1-3/8" x 21 spl	Tractor yoke CV HALF
92-14517955	92-14516855	1-3/4" x 20 spl	Implement clamp yoke HALF
14717955	14716855	1-3/4" x 20 spl – 1-3/4" x 20 spl	Complete driveline 55" OAL
93-14717955	93-14716855	1-3/4" x 20 spl	Tractor yoke CV HALF
92-14517955	92-14516855	1-3/4" x 20 spl	Implement clamp yoke HALF

NOTE: NEW PART NUMBERS HAVE EQUAL LENGTH CROSS & BEARING.

PTO ASSEMBLIES &
COMPONENTS

JOHN DEERE® & CASE-IH® COMBINE HEADER DRIVELINES

Combine Header



PART #	COMBINE YOKE	HEADER YOKE	OAL	DESCRIPTION	SERIES
14007635	1-3/8" x 21 spl	1-1/8" hex clamp	35"	Deere® headers using two (2) drivelines per header	2400
14007631	1-3/8" x 21 spl	1-1/8" hex clamp	31"	Deere® headers using one (1) drivelines per header	2400
14007633	1-1-8" x hex SSL	1-1/8" hex clamp	33"	Case IH® combine using Deere® header	2400

PTO ASSEMBLIES & COMPONENTS

METRIC TRI-LOBE (ITALIAN-STYLE)



Genuine Weasler

- Weasler CV's now equipped with Italian-style tri-lobe tubing.
- Very significant field population of machines equipped with Italian CV's.
- **Weasler CV** has fully enclosed center housing with patented ball and socket system = **higher performance and longer life.**
- Light weight and compact CV design for handling ease - and has easy access for all greasing locations.
- EasyOff / Easy On - CV carries patented and user-friendly **Easy Lock Guard System.**

- Round Balers
- Flexwing Mowers
- Hay Rakes
- Tedders
- Sprayers

CV TRACTOR HALF ASSEMBLY MIX AND MATCH FOR COMPLETE OFFERING TUBE HALF ASSEMBLY

Interchanges with:

Bondoli & Pavesi

(APPROXIMATE 60" OVERALL COMPRESSED LENGTH)

WEI Part #	ByPy Series	Tractor Yoke	WEI Part #	Overall Length	WEI Part #	Overall Length	WEI Part #	Overall Length
93-14586660	4	1-3/8" 6 Spl.	36 mm O.D.	52 in.	92-14586460	41 in.	92-14586660	42 in.
93-14686460	4	1-3/8" 21 Spl.	43 mm O.D.	52 in.				
93-14786660	6	1-3/8" 6 Spl.	54 mm O.D.	54 in.				
93-14686660	6	1-3/8" 21 Spl.	54 mm O.D.	54 in.				
93-14786660	6	1-3/4" 20 Spl.	54 mm O.D.	54 in.				

Utilizes Heavy-Duty Thick Wall (5.4mm) Tube

NOTE: Order Implement Yoke and Cross & Bearing Kit as required. Cut-to-Length CV drivelines may need to be adjusted for the intended application. See other side for driveline cut-to-length adjustment instructions.

“READY-TO-GO” ROUND BALER CV REPLACEMENTS...

Genuine Weasler

- choice of the OEM's
- leading provider to the Aftermarket !



• CV TRACTOR TUBE HALF ASSEMBLY •

Interchanges with:

1-3/8" x 6 Spline Tractor Yoke - 540 RPM

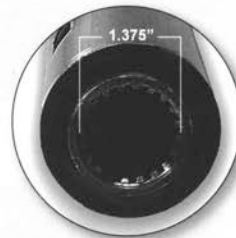
Part #: 92-14558659:

DEERE® MODELS: 447, 449, 457, 458, 458S, 459, 467, 468, 469, 547, 557, 558, 559, 567, 568, 569

1-3/8" x 21 Spline Tractor Yoke - 1000 RPM

Part #: 92-14658659:

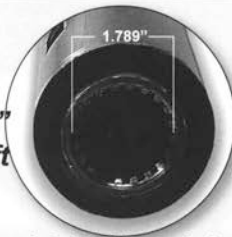
DEERE® MODELS: 447, 457, 468, 468S, 469, 547, 557, 568, 569



CAT 4
Fits 1 5/16" Spline Shaft

PTO ASSEMBLIES & COMPONENTS

CAT 5
Fits 1 11/16" Spline Shaft



Interchanges with:

1-3/8" x 6 Spline Tractor Yoke - 540 RPM

Part #: 92-14505859:

DEERE® MODELS: 447, 448, 457, 467, 547, 557, 567

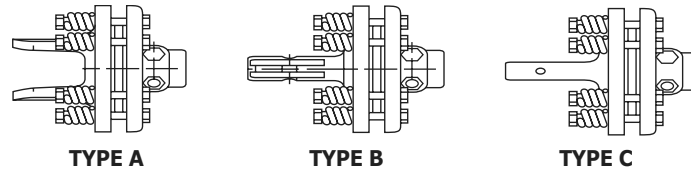
1-3/8" x 21 Spline Tractor Yoke - 1000 RPM

Part #: 92-14605859:

DEERE® MODELS: 467, 468, 468S, 567, 568

NOTE: Certain models (highlighted above) were originally equipped to accept either the large (1-11/16") spline or the smaller (1-5/16") spline. Please verify correct spline configuration before ordering.

FRICION DISC SLIP CLUTCH



Standard2 Disc 8000 In. lb. Torque

AGRI #	SERIES	TYPE	DESCRIPTION
1343018	3	A	Complete torque limiter with yoke 1-3/8" 6 spl
1344018	4	A	Complete torque limiter with yoke 1-3/8" 6 spl
1345018	5	A	Complete torque limiter with yoke 1-3/8" 6 spl
1346018	6	A	Complete torque limiter with yoke 1-3/8" 6 spl
1356104	All	B	Slip clutch attachment with yoke 1-3/8" 6 spl
1356242	All	C	Slip clutch attachment with yoke 1-3/8" 6 spl smooth shaft
1805010	All		Replacement friction disc: 140mm with 3-5/16" hole

Heavy Duty 2 Disc 10,600 In. lb. Torque

AGRI #	SERIES	TYPE	DESCRIPTION
1385018	5	A	Complete torque limiter with yoke 1-3/8" 6 spl
1386018	6	A	Complete torque limiter with yoke 1-3/8" 6 spl
1406028	6	A	Complete torque limiter with yoke 1-3/4" 20 spl
1386016	6	A	Complete torque limiter with yoke 1-3/8" I.B.*

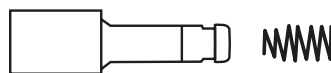
***New style with interfering bolt for safety.**

Heavy Duty 4 Disc 12,850 In. lb. Torque

AGRI #	SERIES	TYPE	DESCRIPTION
1466030	6	A	Complete torque limiter with yoke 1-3/8" 6 spl
1446037	6	A	Complete torque limiter with yoke 1-3/4" 20 spl

Heavy Duty 4 Disc 10,600 In. lb. Torque

AGRI #	SERIES	TYPE	DESCRIPTION
1468031	8	A	Complete torque limiter with yoke 1-3/8" 6 spl
1448034	8	A	Complete torque limiter with yoke 1-3/4" 20 spl
1456030	6/7/8	B	Slip clutch attachment with male shaft 1-3/8" 6 spl
1808010	All		Replacement friction disc. 160mm with 3-13/16" hole



Q.D. Repair Kits

AGRI #	DESCRIPTION
13006121	Kit for 1-3/8" x 6 spl and 21 spl Bondioli series 1, 2, 3, 4, 5, 6, 7, 8, and 9 series
13006720	Kit for 7N series 1-3/4" 20 spl
13007120	Kit for 1-3/4" 20 spl. All Walterscheid series. Spring internal to yoke.
13007138	Kit for 1-3/8" 6 spl and 21 spl. All Walterscheid series.